

LOC/DME I-EAU	APP CRS	Rwy Ldg	7301
109.5	224°	TDZE	913
Chan 32		Apt Elev	913

ILS or LOC RWY 22

CHIPPEWA VALLEY RGNL (EAU)

From DRDAN and MENRD RNAV-1 GPS required.
DME required.

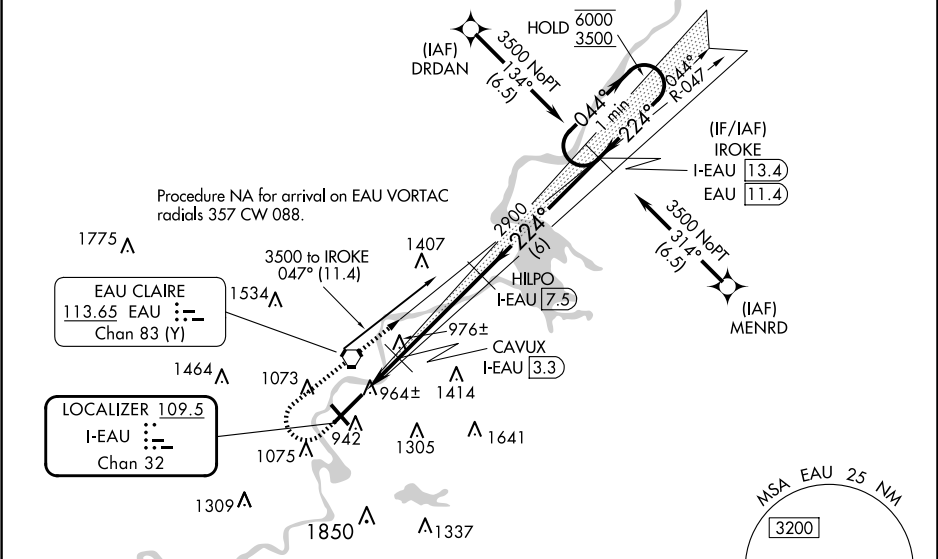
⚠

For inop ALS increase S-LOC 22 Cat C and D visibility to ¾ SM. For inop ALS when using Rice Lake altimeter setting, increase S-ILS 22 all Cats visibility to 1 SM. When local altimeter setting not received, use Rice Lake altimeter setting and increase DA 110 feet and all MDA 120 feet, increase S-LOC 22 Cat C and D and Circling Cat C visibility ¼ SM. VDP NA when using Rice Lake altimeter setting.

MALSR

MISSED APPROACH: Climb to 1600 then climbing right turn to 3500 on EAU VORTAC R-047 to IROKE/I-EAU LOC/DME 13.4 DME and hold.

ATIS 126.025	MINNEAPOLIS CENTER 125.3 335.6	EAU CLAIRE TOWER ★ 118.575 (CTAF) 0	GND CON 120.925	UNICOM 122.95
------------------------	--	---	---------------------------	-------------------------



ELEV 913 D TDZE 913

HIRL Rwy 4-22 1

MIRL Rwy 14-32 1

REIL Rwy 4 and 14 1

224°

5000 X 100

8101 X 150

0.6% DOWN

TWR 968

941

32

FAF to MAP 6.1 NM

Knots	60	90	120	150	180
Min:Sec	6:06	4:04	3:03	2:26	2:02

	1600	3500	IROKE I-EAU 13.4	Use I-EAU DME when on the localizer course.	One Minute Holding Pattern
* LOC only					
	I-EAU 1.4	I-EAU 2.2	CAVUX I-EAU 3.3	HILPO I-EAU 7.5	IROKE I-EAU 13.4
	0.8	1.1 NM	4.2 NM	6 NM	
CATEGORY	A	B	C	D	
S-ILS 22		1113-½	200 (200-½)		
S-LOC 22		1220-½	307 (400-½)		
CIRCLING	1480-1 567 (600-1)	1540-1 627 (700-1)	1660-2¼ 747 (800-2¼)	2200-3 1287 (1300-3)	