
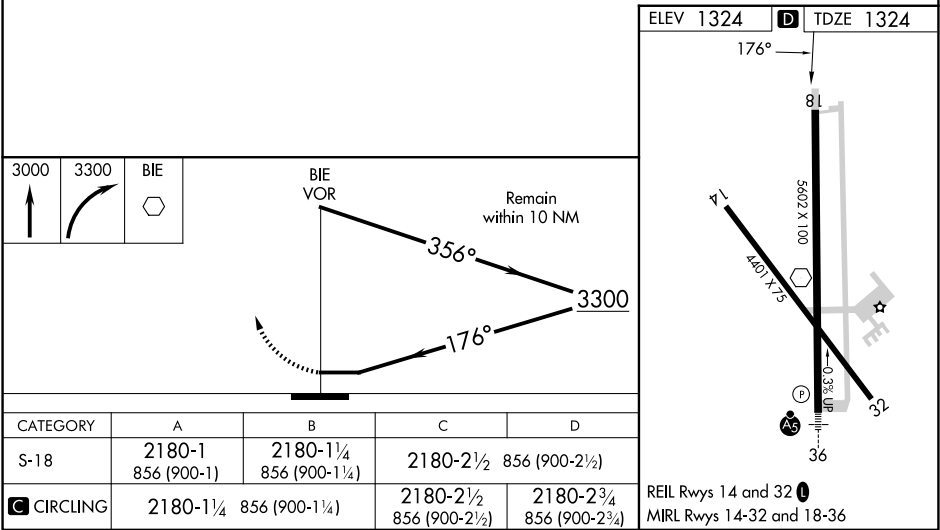
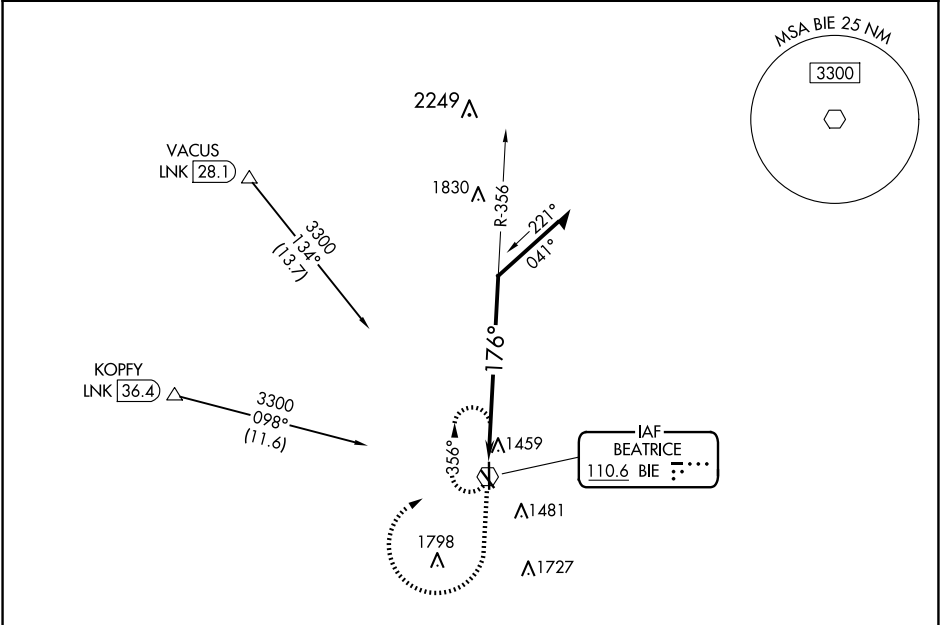


VOR BIE 110.6	APP CRS 176°	Rwy Idg TDZE Apt Elev 5602 1324 1324
-------------------------	------------------------	--

VOR RWY 18

BEATRICE MUNI (BIE)

DME required for procedure entry.		MISSED APPROACH: Climb to 3000 then climbing right turn to 3300 direct BIE VOR and hold.
	Rwy 18 helicopter visibility reduction below ¾ SM NA.	
AWOS-3 125.325	MINNEAPOLIS CENTER 126.4 317.7	UNICOM 122.8 (CTAF) 0



NC-2, 07 AUG 2025 to 04 SEP 2025

NC-2, 07 AUG 2025 to 04 SEP 2025