

WAAS  
CH **42920**  
**W18A**

APP CRS  
**176°**

Rwy Idg  
TDZE  
Apt Elev

**5602**  
**1324**  
**1324**

**RNAV (GPS) RWY 18**

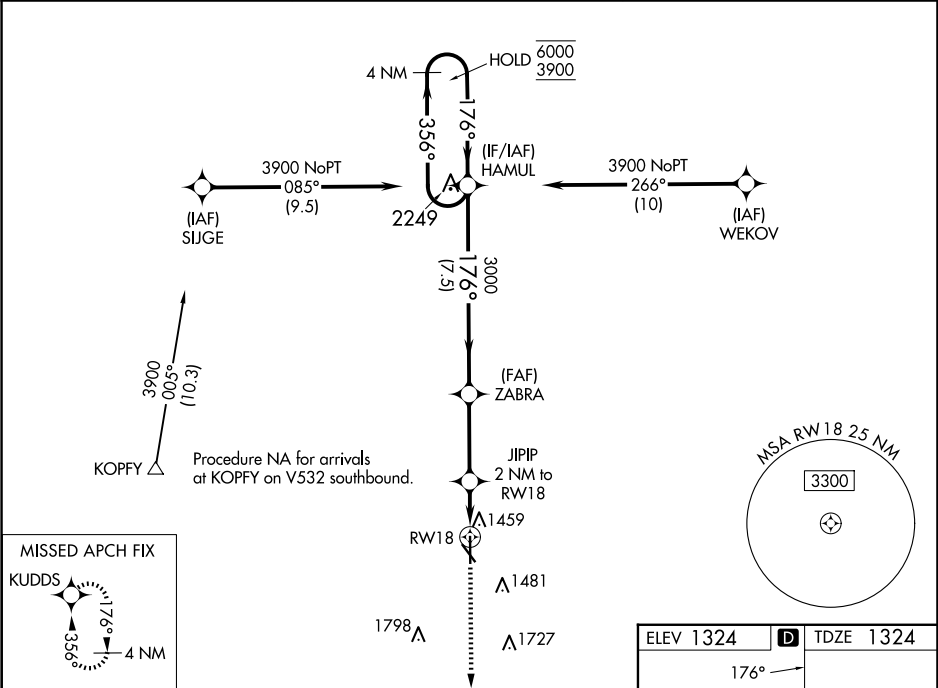
BEATRICE MUNI (BIE)

RNP APCH - GPS.

Rwy 18 helicopter visibility reduction below ¾ SM NA. For uncompensated Baro-VNAV systems, LNAV/VNAV NA below -17°C or above 54°C.

MISSED APPROACH: Climb to 3600 direct KUDD5 and hold.

AWOS-3 <b>125.325</b>	MINNEAPOLIS CENTER <b>126.4 317.7</b>	UNICOM <b>122.8 (CTAF) 0</b>
--------------------------	--	---------------------------------



4 NM Holding Pattern		HAMUL		ZABRA		JIPIP 2 NM to RW18		3600 KUDD5	
6000 ← 356° 3900 → 176°		176°		3000		1.2 NM to RW18		RW18	
GP 3.00° TCH 45		7.5 NM		3.1 NM		0.8		1.2 NM	
CATEGORY	A	B	C	D					
LPV DA	1574-3/4 250 (300-3/4)								
LNAV/ VNAV DA	1670-1 346 (400-1)								
LNAV MDA	1760-1	436 (500-1)	1760-1 1/4	436 (500-1 1/4)					
CIRCLING	1820-1	496 (500-1)	2000-2 676 (700-2)	2100-2 1/2 776 (800-2 1/2)					

