


VOR RWY 22
DELAWARE COASTAL (GED)

Rwy 22 helicopter visibility reduction below 1 SM NA.
Rwy 22 Straight-In and Circling minimums NA at night.

MISSED APPROACH: Climb to 800 then climbing left turn to 3000 direct ATR VOR/DME and hold.

ASOS 118,375	DOVER APP CON 132,425 257,875	GCO 125,55	UNICOM 123.0 (CTAF) 
------------------------	---	----------------------	---

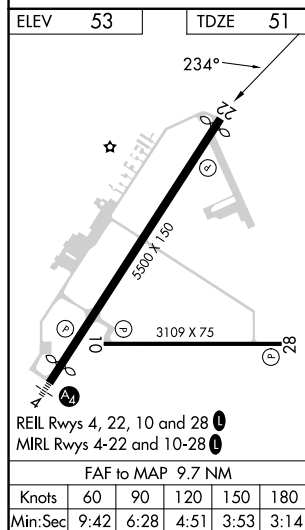
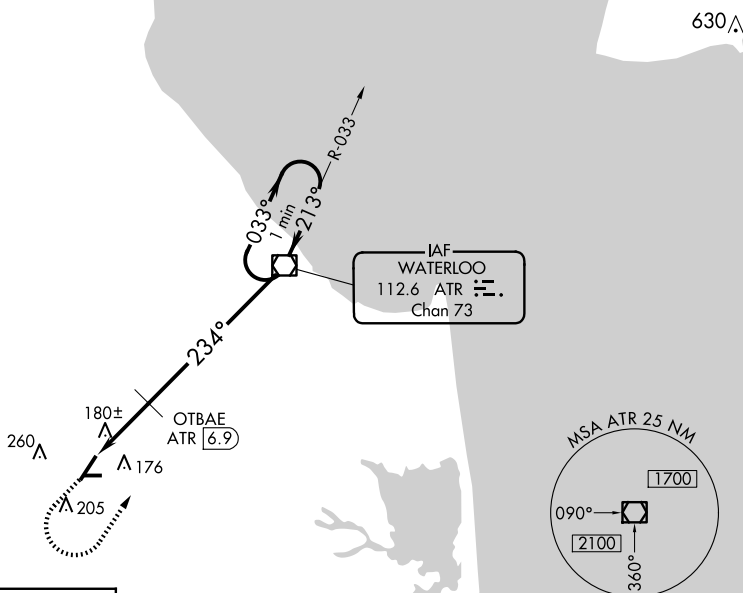


Diagram illustrating a VOR/DME station and a circling approach. The VOR/DME station is located at the top right, with a "One Minute Holding Pattern" indicated. The approach starts at a 3000 ft altitude, descends to 680 ft, and then turns to a 234° heading. The distance from the station to the 680 ft fix is 6.9 NM. The distance from the 680 ft fix to the start of the approach is 2.8 NM. The approach is labeled "ATR 9.7" and "OTBAE ATR 6.9". The VOR/DME station is labeled "ATR VOR/DME" and "VGS1 and descent angles not coincident (VGS1 Angle 3.00/TCH 45)".

NE-3, 07 AUG 2025 to 04 SEP 2025