

WAAS CH <b>60921</b> <b>W22A</b>	APP CRS <b>225°</b>	Rwy ldg <b>5331</b> TDZE <b>51</b> Apt Elev <b>53</b>
--	------------------------	---

# RNAV (GPS) RWY 22

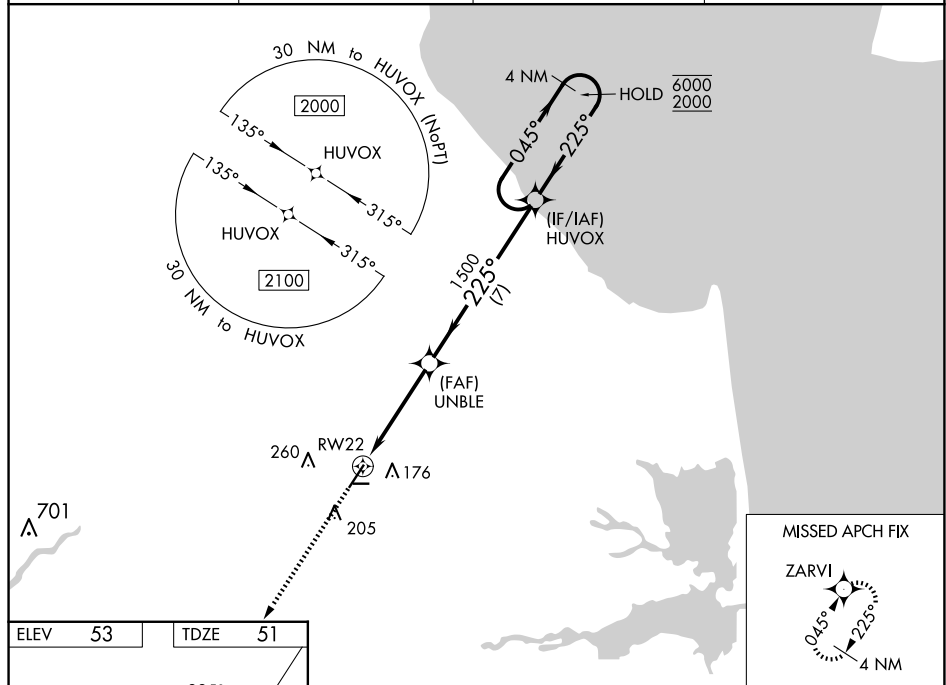
## DELAWARE COASTAL (GED)

RNP APCH.

**T** Rwy 22 helicopter visibility reduction below  $\frac{3}{4}$  NA.  
**A** For uncompensated Baro-VNAV systems, LNAV/VNAV NA below -11°C or above 54°C.

**MISSED APPROACH:** Climb to 2000 direct ZARVI and hold.

ASOS <b>118.375</b>	DOVER APP CON <b>132.425 257.875</b>	GCO <b>125.55</b>	UNICOM <b>123.0</b> (CTAF) <b>U</b>
------------------------	---	----------------------	--



REIL Rwy 4, 22, 10 and 28  
MRL Rwy 4-22 and 10-28

5300' x 150'

3109' x 75'

225°

4 NM Holding Pattern

VGS and RNAV glidepath not coincident (VGS Angle 3.00/TCH 45)