

TACAN Y RWY 5L

TACAN NTU Chan 113	APCH CRS 043°	Rwy Idg 8000 TDZE 20 Arpt Elev 22
------------------------------	-------------------------	--------------------------------------------------------------

[USN]

OCEANA NAS (APOLLO SOUCEK FLD) (KNTU)

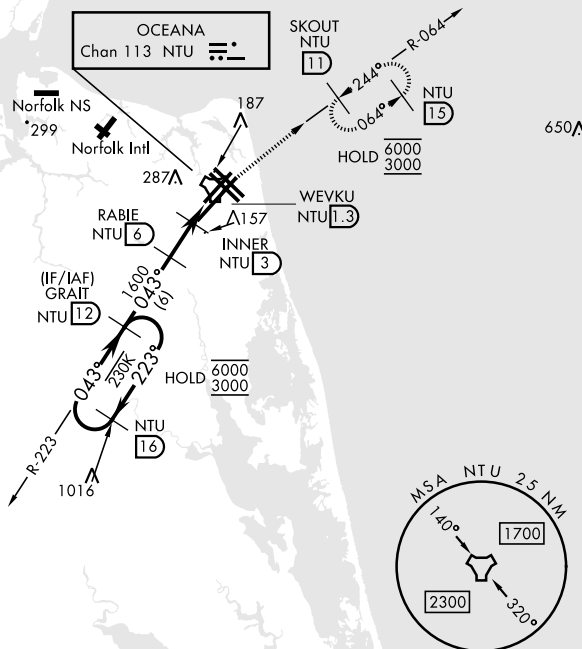


MISSED APPROACH: Climb to 3000 via R-223 to NTU TACAN then via R-064 to SKOUT and hold.

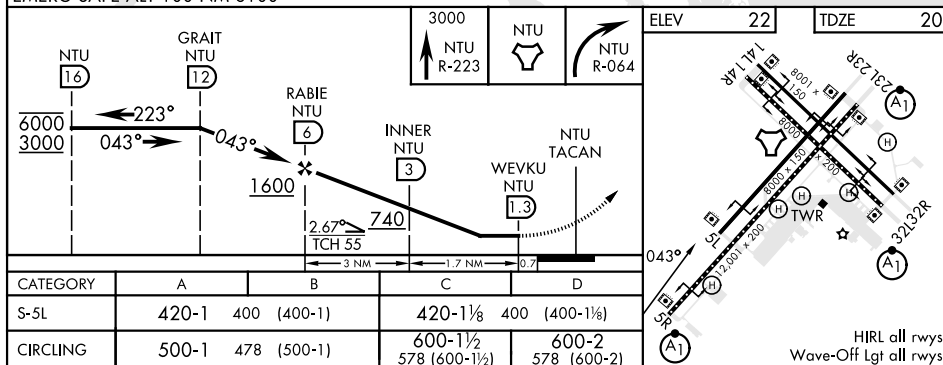
ATIS 317.6	APP/DEP CON 123.9 266.8	TOWER 127.075 360.2	GND CON 119.6 336.4	CLNC DEL 254.4	ASR/ PAR
---------------	----------------------------	------------------------	------------------------	-------------------	-------------

Knots	60	120	180	240	300	360
V/V(fpm)	210	420	630	840	1050	1260

ATC climb of 210 ft/NM to 3000



EMERG SAFE ALT 100 NM 6100



VIRGINIA BEACH, VIRGINIA

36°49'N-76°02'W

OCEANA NAS (APOLLO SOUCEK FLD) (KNTU)

Amdt 1 12JUN25

HIRL all rwys
Wave-Off Lat all rwys

TACAN Y RWY 5L

NE-3, 07 AUG 2025 to 04 SEP 2025

NE-3, 07 AUG 2025 to 04 SEP 2025