

TACAN Y RWY 23L/R

TACAN NTU Chan 113	APCH CRS 244°	Rwy Idg 23L 12,001 TDZE 23L 21 Arpt Elev 22	23R 8000 23R 20
-----------------------	------------------	---	--------------------

[USN]
OCEANA NAS (APOLLO SOUCEK FLD) (KNTU)

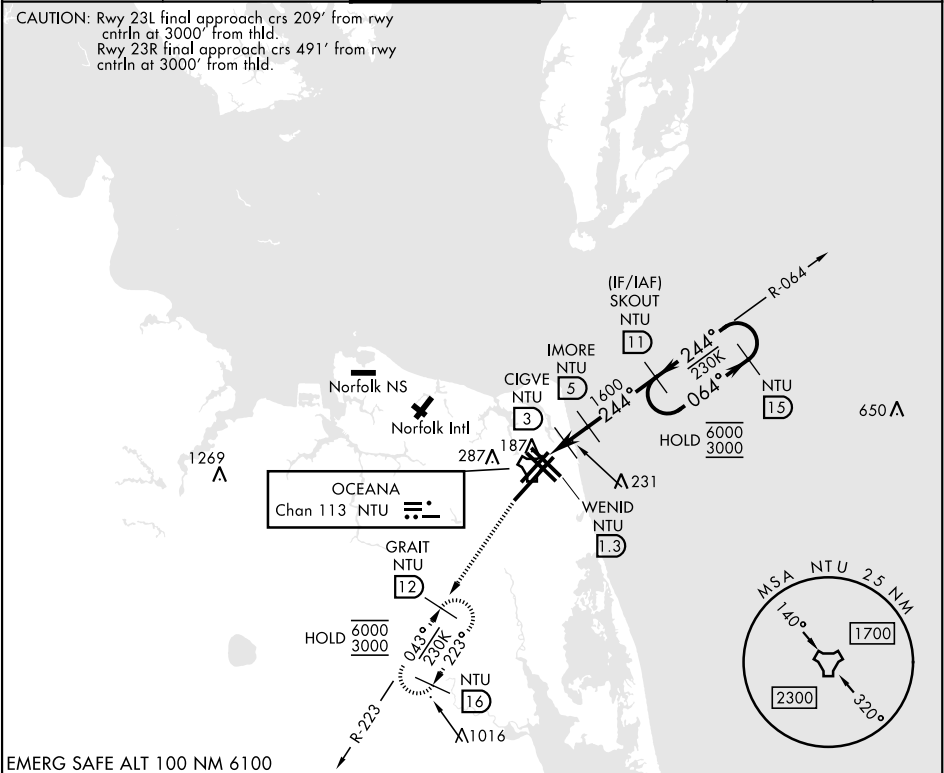
⚠ * When ALS inop, increase CAT AB vis to 1 mile,
CAT CD vis to 1½ miles.



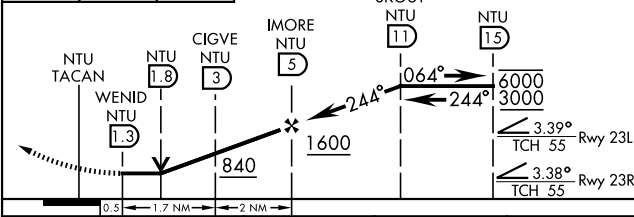
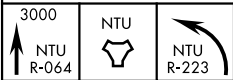
MISSED APPROACH: Climb to 3000 via R-064 to NTU
TACAN then via R-223 to GRAIT and hold.

ATIS 317.6	APP/DEP CON 123.9 266.8	TOWER 127.075 360.2	GND CON 119.6 336.4	CLNC DEL 254.4	ASR/ PAR
---------------	----------------------------	------------------------	------------------------	-------------------	-------------

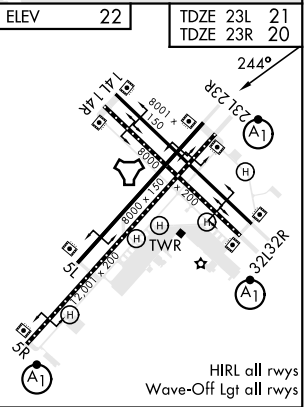
CAUTION: Rwy 23L final approach crs 209° from rwy
cntrln at 3000' from thld.
Rwy 23R final approach crs 491° from rwy
cntrln at 3000' from thld.



EMERG SAFE ALT 100 NM 6100



CATEGORY	A	B	C	D
S-23L *	440-½ 419 (500-½)		440-¾ 419 (500-¾)	
S-23R	440-1 420 (500-1)		440-1⅞ 420 (500-1⅞)	
CIRCLING	500-1 478 (500-1)		600-1½ 578 (600-1½)	600-2 578 (600-2)



TACAN Y RWY 23L/R

NE-3, 07 AUG 2025 to 04 SEP 2025

NE-3, 07 AUG 2025 to 04 SEP 2025