

VIRGINIA BEACH, VIRGINIA

RNAV (GPS) RWY 5R

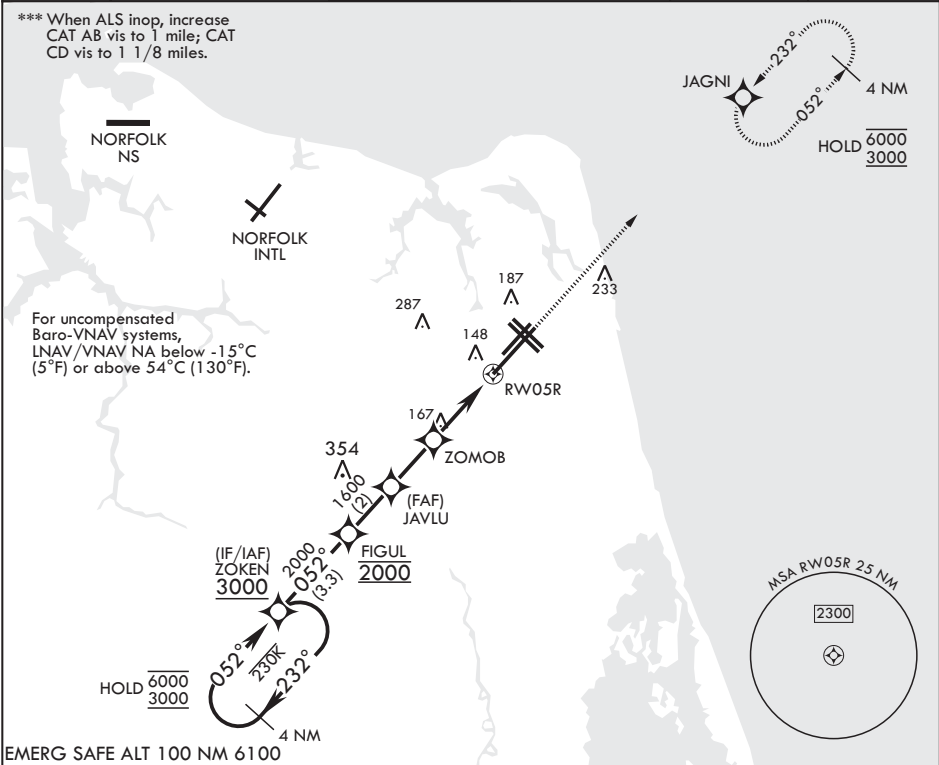
WAAS CH 69870 W05B	APCH CRS 052°	Rwy ldg TDZE Arprt Elev	12,001 19 22
----------------------------------------	-------------------------	-------------------------------	-----------------------------------------

- (USN)

OCEANA NAS (APOLLO SOUCEK FLD) (KNTU)

RNP APCH-GPS	ALSF-1	MISSED APPROACH: Climb to 3000 direct JAGNI and hold. Continue climb in hold to 3000.
▼ * When ALS inop increase vis to 3/4 mile. ** When ALS inop increase vis to 7/8 mile.		

ATIS 317.6	APP CON/DEP CON 123.9 266.8	TOWER 127.075 360.2	GND CON 119.6 336.4	CLNC DEL 254.4	ASR/PAR
----------------------	---------------------------------------	-------------------------------	-------------------------------	--------------------------	---------



EMERG SAFE ALT 100 NM 6100		4 NM Holding Pattern ZOKEN	3000	JAGNI	ELEV 22	TDZE 19
		FIGUL	2000	JAVLU	1600	ZOMOB
GP 3.00° TCH 55		2 NM	2.8 NM	1.1 NM to RWY 5R		
CATEGORY	A	B	C	D		
LPV DA*	219-½	200	(200-½)			
RNAV/VNAV DA**	333-½	314	(400-½)			
RNAV MDA***	420-½	401 (400-½)	420-¾	401 (400-¾)		
CIRCLING	500-1	478 (500-1)	600-1½ 578 (600-1½)	600-2 578 (600-2)		

VIRGINIA BEACH, VIRGINIA

36°49'N - 76°02'W OCEANA NAS (APOLLO SOUCEK FLD) (KNTU)

Amdt 5 12JUN25

RNAV (GPS) RWY 5R

NE-3, 07 AUG 2025 to 04 SEP 2025

NE-3, 07 AUG 2025 to 04 SEP 2025