

VIRGINIA BEACH, VIRGINIA

## RNAV (GPS) RWY 23R

WAAS CH 71079 W23B	APCH CRS 232°	Rwy Idg 8000 TDZE 20 Arpt Elev 22
--------------------------	------------------	---

- (USN)

OCEANA NAS (APOLLO SOUCEK FLD) (KNTU)

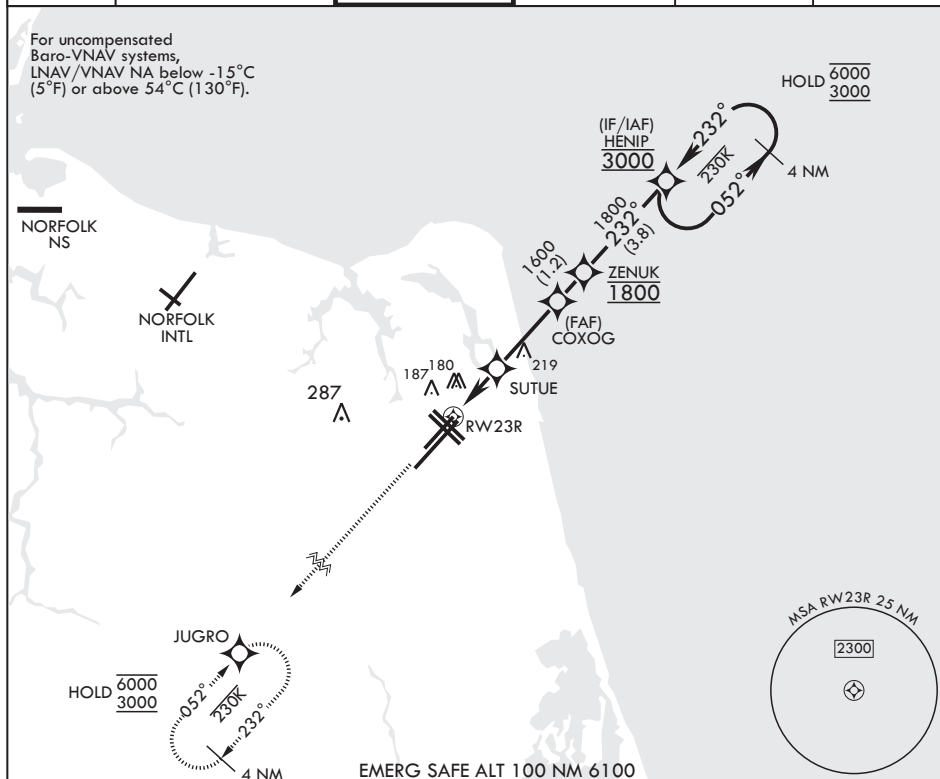
RNP APCH-GPS

**MISSED APPROACH:** Climb to 3000 direct JUGRO and hold.

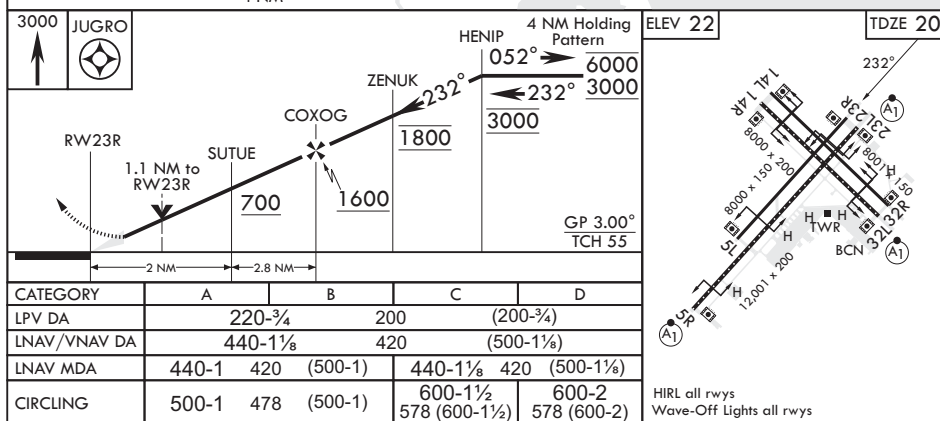


ATIS 317.6	APP CON/DEP CON 123.9 266.8	TOWER 127.075 360.2	GND CON 119.6 336.4	CLNC DEL 254.4	ASR/PAR
---------------	--------------------------------	------------------------	------------------------	-------------------	---------

For uncompensated  
Baro-VNAV systems,  
LNAV/VNAV NA below -15°C  
(5°F) or above 54°C (130°F).



EMERG SAFE ALT 100 NM 6100



VIRGINIA BEACH, VIRGINIA

36°49'N - 76°02'W OCEANA NAS (APOLLO SOUCEK FLD) (KNTU)

Amdt 5 12JUN25

## RNAV (GPS) RWY 23R

NE-3, 07 AUG 2025 to 04 SEP 2025