

VIRGINIA BEACH, VIRGINIA

RNAV (GPS) RWY 23L

WAAS CH 67300 W23A	APCH CRS 232°	Rwy ldg TDZE Arprt Elev	12,001 21 22
--	-------------------------	-------------------------------	---

- (USN)

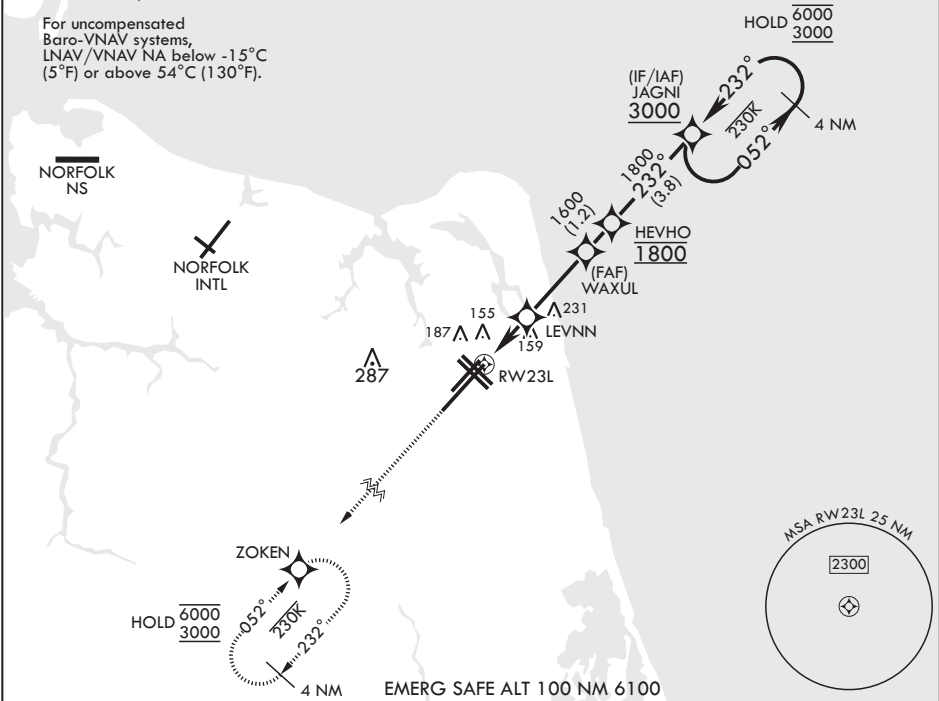
OCEANA NAS (APOLLO SOUCEK FLD) (KNTU)

RNP APCH-GPS	ALSIF-1	MISSED APPROACH: Climb to 3000 direct ZOKEN and hold.
* When ALS inop, increase vis to 3/4 mile. ** When ALS inop, increase vis to 7/8 mile.		

ATIS 317.6	APP CON/DEP CON 123.9 266.8	TOWER 127.075 360.2	GND CON 119.6 336.4	CLNC DEL 254.4	ASR/PAR
----------------------	---------------------------------------	-------------------------------	-------------------------------	--------------------------	---------

*** When ALS inop, increase
CAT AB vis to 1 mile; CAT
CD vis to 1 1/8 miles.

For uncompensated
Baro-VNAV systems,
LNAV/VNAV NA below -15°C
(5°F) or above 54°C (130°F).



3000	ZOKEN	JAGNI 4 NM Holding Pattern	ELEV 22	TDZE 21
CATEGORY	A	B	C	D
LPV DA*	221-1/2	200	(200-1/2)	
LNAV/VNAV DA**	324-1/2	303	(400-1/2)	
LNAV MDA***	420-1/2	399 (400-1/2)	420-5/8 399 (400-5/8)	
CIRCLING	500-1	478 (500-1)	600-1 578 (600-1 1/2)	600-2 578 (600-2)

VIRGINIA BEACH, VIRGINIA

36°49'N - 76°02'W OCEANA NAS (APOLLO SOUCEK FLD) (KNTU)

Amdt 5 12JUN25

RNAV (GPS) RWY 23L

NE-3, 07 AUG 2025 to 04 SEP 2025

NE-3, 07 AUG 2025 to 04 SEP 2025