

HI-TACAN Z RWY 5R

TACAN NTU Chan <b>113</b>	APCH CRS <b>043°</b>	Rwy Idg TDZE Arprt Elev <b>12,001</b> <b>19</b> <b>22</b>
------------------------------	-------------------------	---

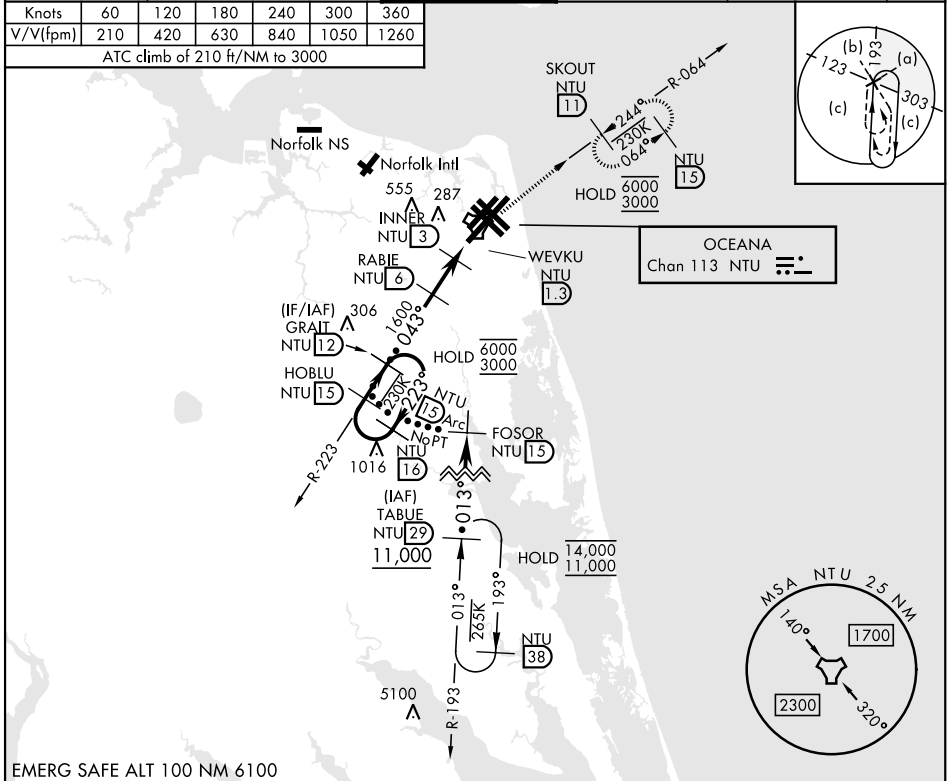
[USN]

OCEANA NAS (APOLLO SOUCEK FLD) (KNTU)

* When ALS inop, increase CAT CDE vis to 1½ miles.			ALS-F-1 (A1)	MISSED APPROACH: Climb to 3000 via R-223 to NTU TACAN, then via R-064 to SKOUT and hold.	
ATIS <b>317.6</b>	APP/DEP CON <b>123.9 266.8</b>	TOWER <b>127.075 360.2</b>	GND CON <b>119.6 336.4</b>	CLNC DEL <b>254.4</b>	ASR/ PAR

Knots	60	120	180	240	300	360
V/V(fpm)	210	420	630	840	1050	1260

ATC climb of 210 ft/NM to 3000



EMERG SAFE ALT 100 NM 6100			ELEV <b>22</b>	TDZE <b>19</b>
CATEGORY	C	D	E	
S-5R *	420-¾		401	(400-¾)
CIRCLING	600-1½ 578 (600-1½)	600-2 578 (600-2)	900-3 878 (900-3)	

HI-TACAN Z RWY 5R