

VIRGINIA BEACH, VIRGINIA

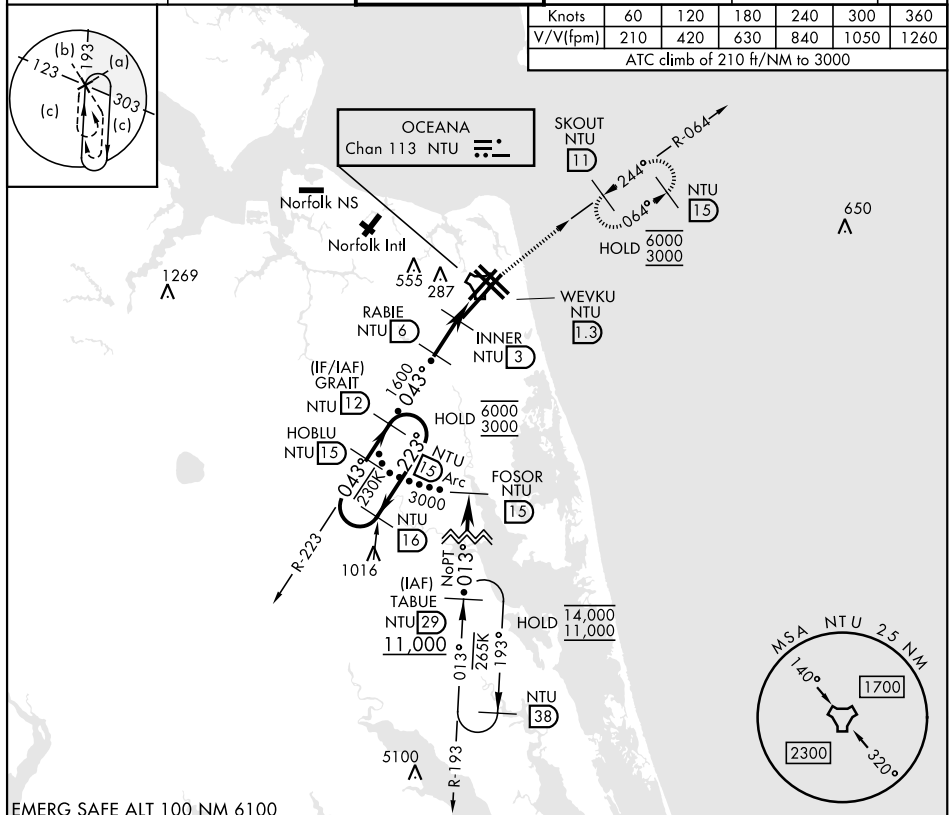
HI-TACAN Z RWY 5L

TACAN NTU Chan <b>113</b>	APCH CRS <b>043°</b>	Rwy Idg <b>8000</b> TDZE <b>20</b> Arpt Elev <b>22</b>	[USN]	OCEANA NAS (APOLLO SOUCEK FLD) (KNTU)
------------------------------	-------------------------	--	-------	---------------------------------------

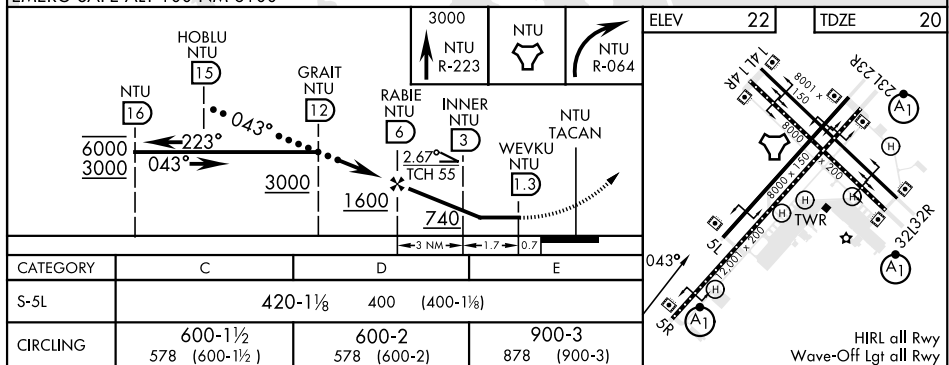
**MISSED APPROACH:** Climb to 3000 via R-223 to NTU TACAN then via R-064 to SKOUT and hold.

ATIS 317.6	APP/DEP CON 123.9 266.8	TOWER 127.075 360.2	GND CON 119.6 336.4	CLNC DEL 254.4	ASR/ PAR
---------------	----------------------------	------------------------	------------------------	-------------------	-------------

Knots	60	120	180	240	300	360
V/V(fpm)	210	420	630	840	1050	1260
ATC climb of 210 ft/NM to 3000						



EMERG SAFE ALT 100 NM 6100



HIRL all Rw  
Wave-Off lat all Rw

VIRGINIA BEACH, VIRGINIA

36°49'N-76°02'W

OCEANA NAS (APOLLO SOUCEK FLD) (KNTU)

Amdt 1 12JUN25

## HI-TACAN Z RWY 5L