

VIRGINIA BEACH, VIRGINIA

HI-TACAN Z RWY 32L/R

TACAN NTU Chan 113	APCH CRS 309°	Rwy Idg TDZE Arprt Elev	32L 8000 22 22	32R 8001 20
------------------------------	-------------------------	-------------------------------	---	------------------------------

[USN]

OCEANA NAS (APOLLO SOUCEK FLD) (KNTU)



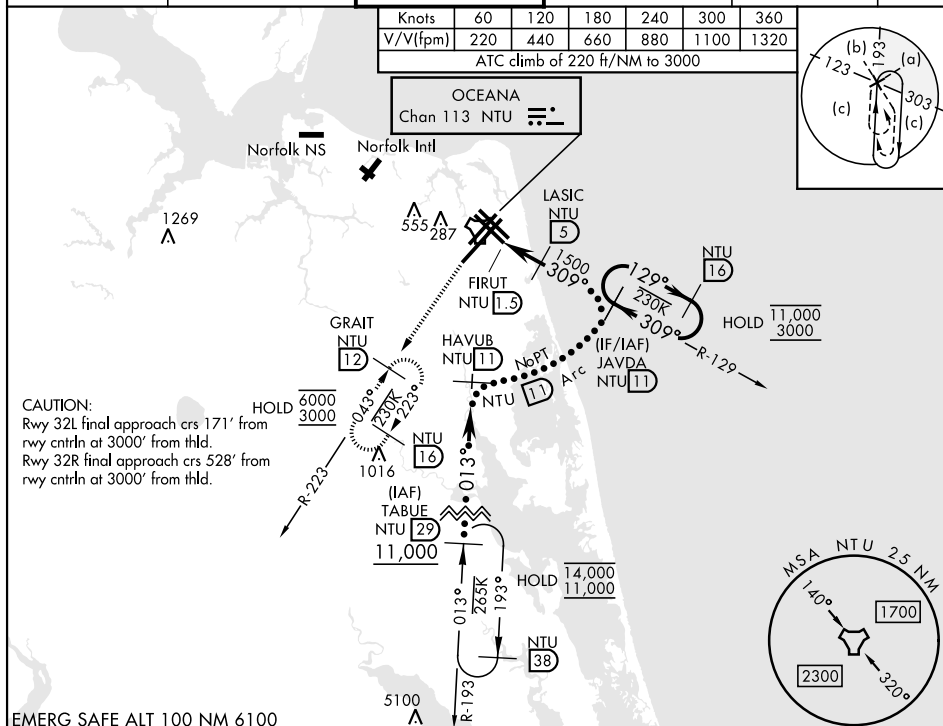
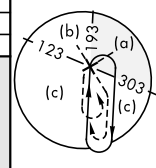
* When ALS inop, increase CAT CDE vis to 1¼ miles.



MISSED APPROACH: Climbing left turn to 3000, intercept NTU TACAN R-223 to GRAIT and hold.

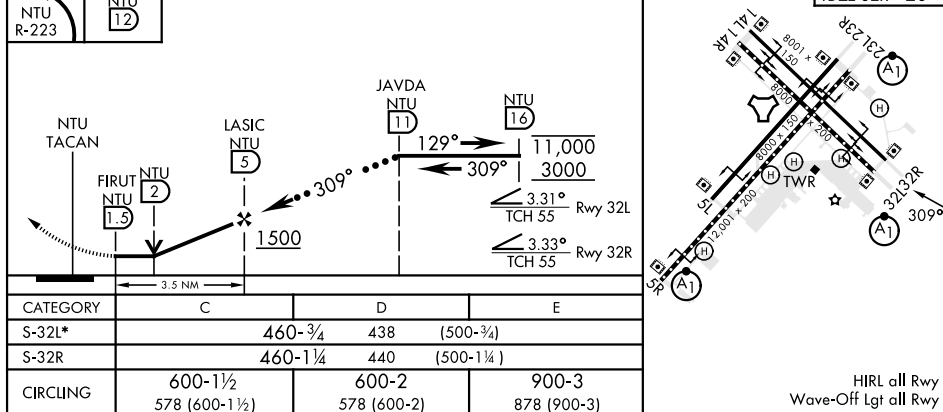
ATIS 317.6	APP/DEP CON 123.9 266.8	TOWER 127.075 360.2	GND CON 119.6 336.4	CLNC DEL 254.4	ASR/ PAR
---------------	----------------------------	------------------------	------------------------	-------------------	-------------

Knots	60	120	180	240	300	360
V/V(fpm)	220	440	660	880	1100	1320
ATC climb of 220 ft/NM to 3000						



EMERG SAFE ALT 100 NM 6100

3000	GRAIT	ELEV 22	TDZE 32L 22
			TDZE 32R 20



VIRGINIA BEACH, VIRGINIA

36°49'N-76°02'W

OCEANA NAS (APOLLO SOUCEK FLD) (KNTU)

Amdt 1 12JUN25

HI-TACAN Z RWY 32L/R

NE-3, 07 AUG 2025 to 04 SEP 2025