

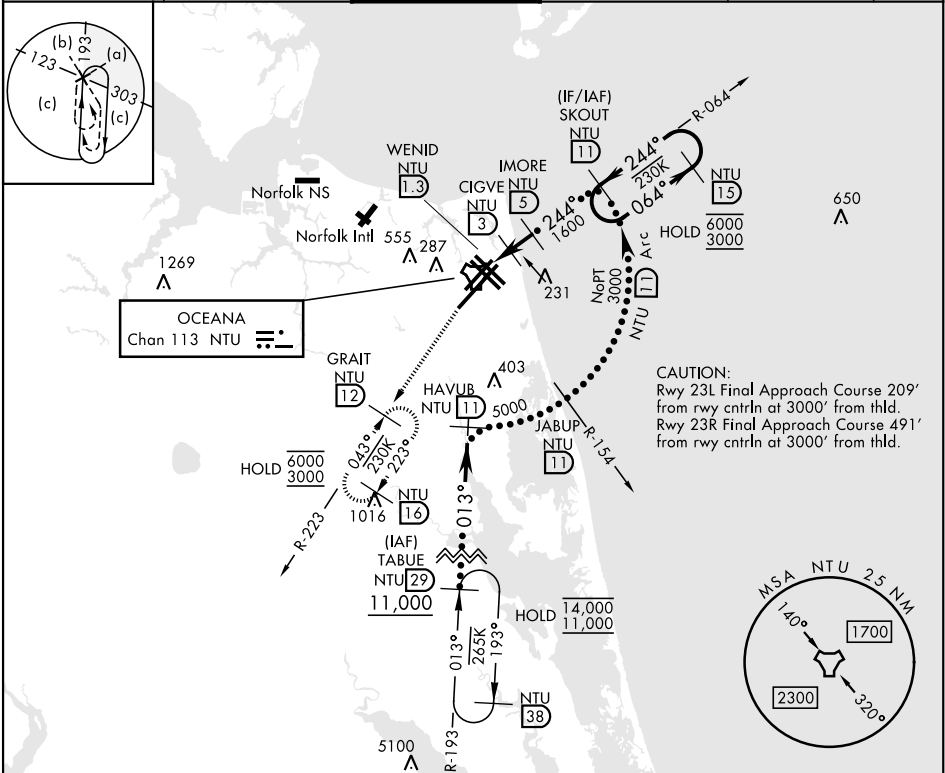
HI-TACAN Z RWY 23L/R

TACAN NTU Chan 113	APCH CRS 244°	Rwy Idg 23L 12,001 TDZE 23L 21 Arpt Elev 22	23R 8000 23R 20
-----------------------	------------------	---	--------------------

[USN]  
OCEANA NAS (APOLLO SOUCEK FLD) (KNTU)

▼ * When ALS inop, increase CAT CDE vis to 1½ miles	ALSF-1 	MISSED APPROACH: Climb to 3000 via R-064 to NTU TACAN, then via R-223 to GRAIT and hold.
---	------------	--

ATIS 317.6	APP/DEP CON 123.9 266.8	TOWER 127.075 360.2	GND CON 119.6 336.4	CLNC DEL 254.4	ASR/ PAR
---------------	----------------------------	------------------------	------------------------	-------------------	-------------



EMERG SAFE ALT 100 NM 6100					ELEV 22		TDZE 23L 21 TDZE 23R 20	
CATEGORY	C		D		E			
S-23L*	440-¾		419 (500-¾)					
S-23R	440-1½		420 (500-1½)					
CIRCLING	600-1½ 578 (600-1½)		600-2 578 (600-2)		900-3 878 (900-3)			

VIRGINIA BEACH, VIRGINIA 36°49'N-76°02'W OCEANA NAS (APOLLO SOUCEK FLD) (KNTU)

Amtd 1 12JUN25

HI-TACAN Z RWY 23L/R

NE-3, 07 AUG 2025 to 04 SEP 2025

NE-3, 07 AUG 2025 to 04 SEP 2025