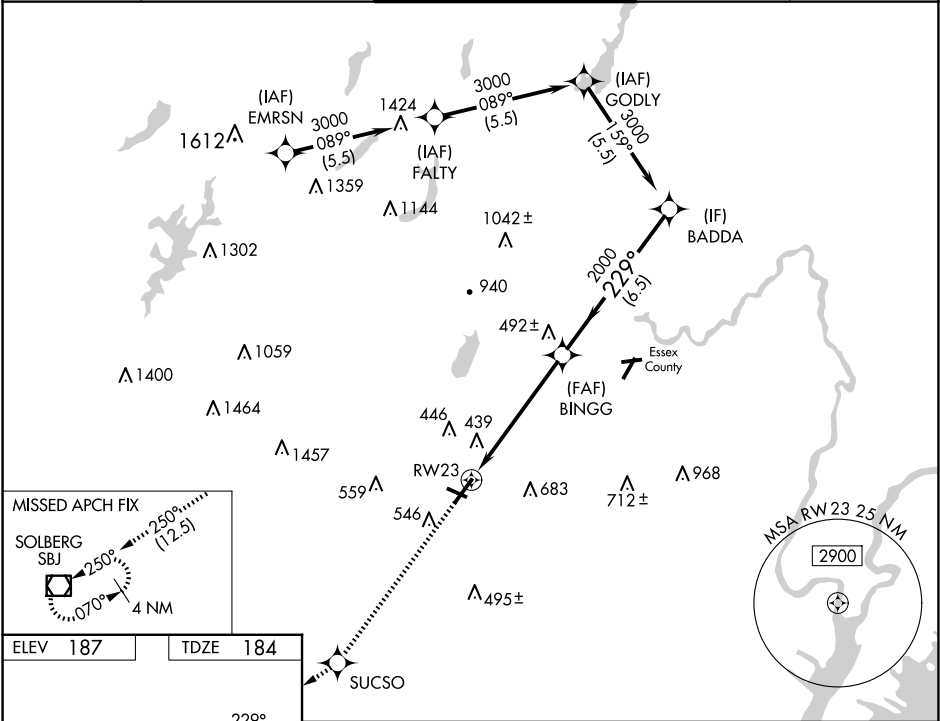


WAAS CH <b>45621</b> <b>W23A</b>	APP CRS <b>229°</b>	Rwy Idg TDZE <b>184</b> Apt Elev <b>187</b>
--	------------------------	---

RNAV (GPS) Z RWY 23

MORRISTOWN MUNI (MMU)

RNP APCH.			MALSR	MISSED APPROACH:
⚠ Circling to Rwy 13, 31 NA at night. For uncompensated Baro-VNAV systems, LNAV/VNAV NA below -15°C or above 54°C. For inop ALS, increase LNAV/VNAV all Cats visibility to 1½ SM and LNAV Cats C/D visibility to 1¾ SM.			AS	Climb to 2000 direct SUCSO then on track 250° to SBJ VOR/DME and hold.
ATIS <b>124.25</b>	NEWARK APP CON <b>127.6 379.9</b>	MORRISTOWN TOWER ★ <b>118.1 0 (CTAF) 353.9</b>	GND CON <b>134.2</b>	CLNC DEL <b>128.6</b>



ELEV 187	TDZE 184				
229°		2000	SUCSO	tr 250°	SBJ
*LNAV only		*1.5 NM to RW23		BINGG	BADDA
RW23		2000	229°		3000
1.5 NM		4 NM	6.5 NM		GP 3.00° TCH 55
CATEGORY	A	B	C	D	
LPV DA	384-1½		200 (200-½)		
LNAV/VNAV DA	749-1¼		565 (600-1¼)		
LNAV MDA	700-½ 516 (600-½)		700-1 516 (600-1)		
CIRCLING	860-1 673 (700-1)	900-1 713 (800-1)	1000-2½ 813 (900-2½)	1200-3 1013 (1100-3)	