

APP CRS	Rwy Idg	5998
229°	TDZE	183
	Apt Elev	187

RNAV (RNP) Y RWY 23

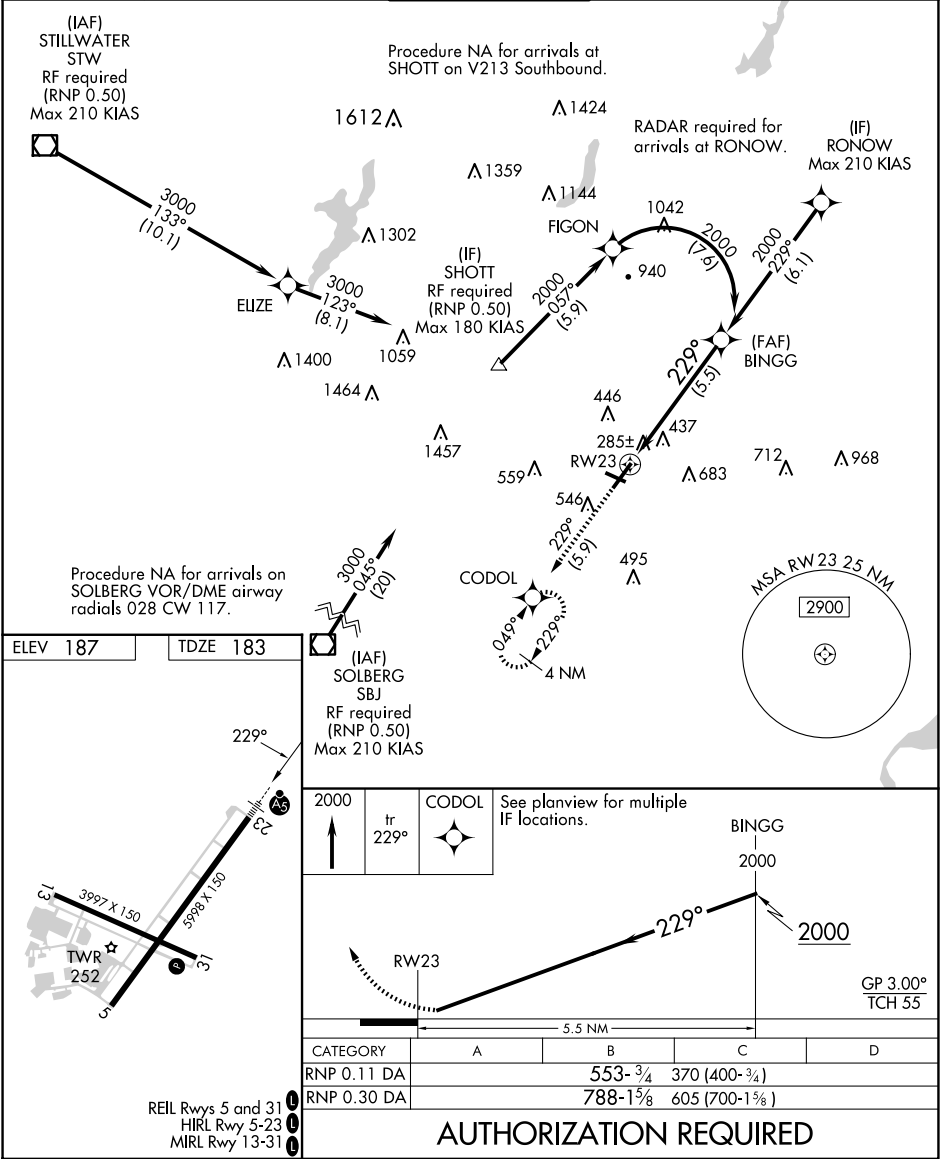
MORRISTOWN MUNI (MMU)

For uncompensated Baro-VNAV systems, procedure NA below -15°C (5°F) or above 48°C (118°F). When local altimeter setting not received, procedure NA. GPS required. For inoperative MALS, increase RNP 0.11 all Cats visibility to 1¼ mile and RNP 0.30 all Cats visibility to 2 miles. Visibility reduction by helicopters NA.

MALS

MISSED APPROACH: Climb to 2000 on track 229° to CODOL and hold.

ATIS	NEWARK APP CON	MORRISTOWN TOWER*	GND CON	CLNC DEL
124.25	127.6 379.9	118.1 (CTAF)353.9	134.2	128.6



NE-2, 07 AUG 2025 to 04 SEP 2025

NE-2, 07 AUG 2025 to 04 SEP 2025