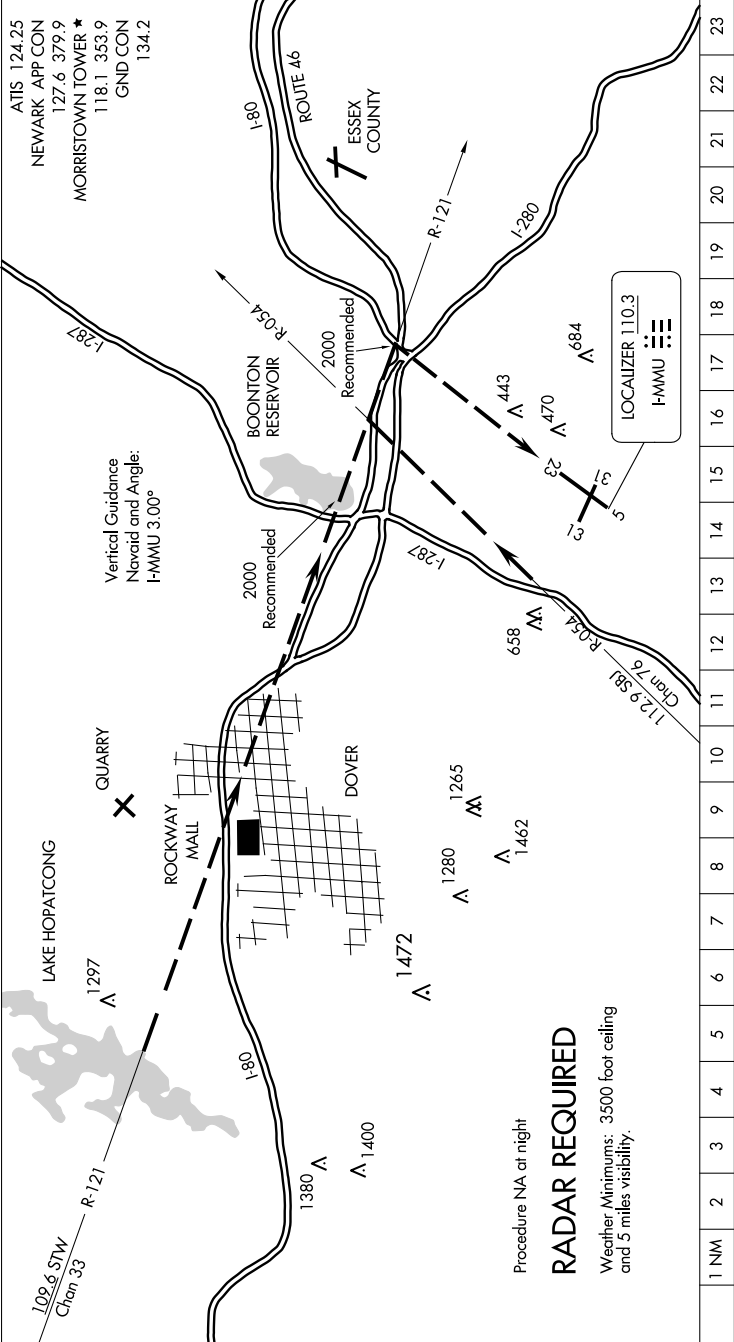


NE-2, 07 AUG 2025 to 04 SEP 2025



Procedure NA at night

RADAR REQUIRED

Weather Minimums: 3500 foot ceiling and 5 miles visibility.

1	2	3	4	5	6	7	8	9	10	11	12	13	14	15	16	17	18	19	20	21	22	23
When approaching the airport from the northwest, expect vectors to intercept the STW R-121. When you see the highway junction of Rts. 46, 80, and 280, proceed to that point to turn final for Rwy 23.																						
When approaching the airport from the southwest, expect vectors to intercept the SBJ R-054. When you see Rt. 287, follow it until turning base over Rt. 80. Turn final over the junction of Rts. 46, 80 and 280 for Rwy 23.																						

NE-2, 07 AUG 2025 to 04 SEP 2025