

WAAS CH <b>97720</b> <b>W05A</b>	APP CRS <b>049°</b>	Rwy Idg <b>5998</b> TDZE <b>184</b> Apt Elev <b>187</b>
--	------------------------	---

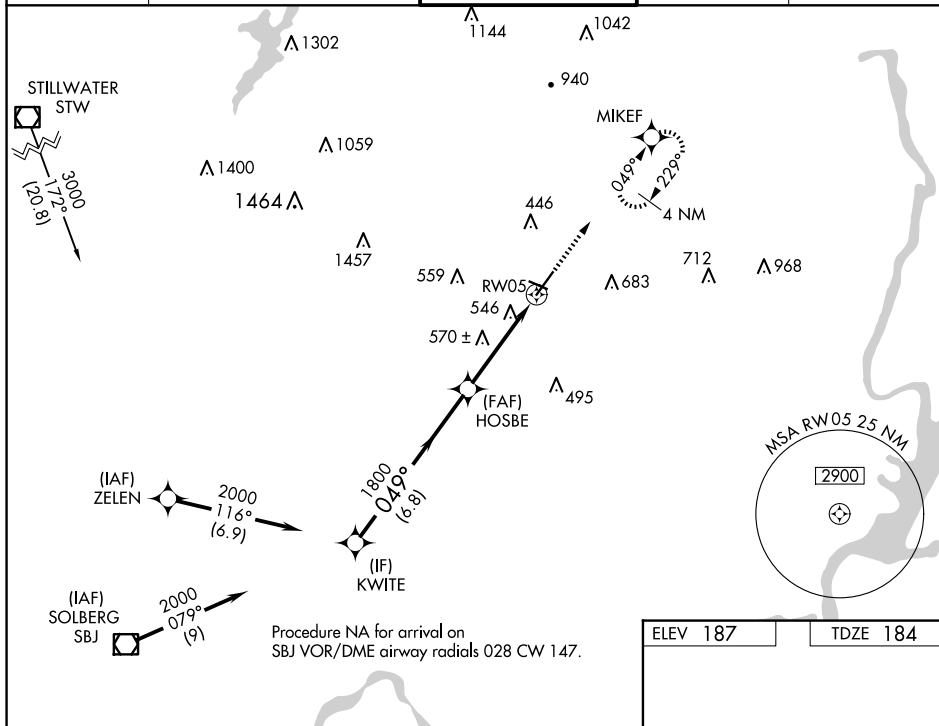
RNAV (GPS) RWY 5  
MORRISTOWN MUNI (MMU)

RNP APCH.

- T** Rwy 5 helicopter visibility reduction below  $\frac{3}{4}$  SM NA.  
**A** For uncompensated Baro-VNAV systems, procedure NA below -15°C or above 46°C.  
 Circling Rwy 13. 31 NA at night.

**MISSED APPROACH:** Climb to 2500 direct MIKEF and hold, continue climb-in-hold to 2500.

ATIS 124.25	NEWARK APP CON 127.6 379.9	MORRISTOWN TOWER* 118.10 (CTAF) 353.9	GND CON 134.2	CLNC DEL 128.6
----------------	-------------------------------	--	------------------	-------------------

[illegible]