

LOC I-MMU	APP CRS	Rwy ldg	5998
110.3	229°	TDZE	184
		Apt Elev	187

ILS or LOC RWY 23

MORRISTOWN MUNI (MMU)

RNAV 1-GPS or RADAR required for procedure entry.  
From EMRSN: RNAV 1-GPS required.

MALSR

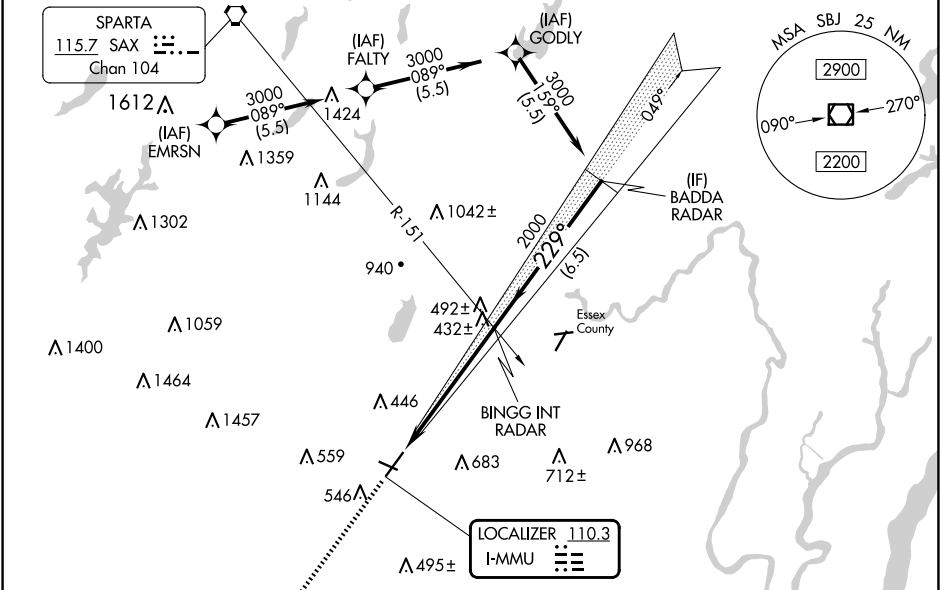
MISSED APPROACH: Climb to 2000 on heading 229° and on SBJ VOR/DME R-070 to SBJ VOR/DME and hold.

▼

▲

Circling to Rwy 13, 31 NA at night. Autopilot coupled approach NA below 732. For inop ALS, increase S-LOC 23 Cats C/D visibility to 1 3/4 SM.

ATIS	NEWARK APP CON	MORRISTOWN TOWER ★	GND CON	CLNC DEL
124.25	127.6 379.9	118.10 (CTAF) 353.9	134.2	128.6



ELEV 187

TDZE 184

2000

hdg 229°

SBJ R-070

SBJ

BINGG INT RADAR

BADDA RADAR

2000

229°

3000

2000

GS 3.00°

TCH 55

112.9 SBJ R-070 Chan 76

SOLBERG SBJ (Chan 76)

250° R-070

229°

2000

3000

2000

GS 3.00°

TCH 55

CATEGORY	A	B	C	D
S-ILS 23	384-1/2 200 (200-1/2)			
S-LOC 23	700-1/2 516 (600-1/2)		700-1 516 (600-1)	
CIRCLING	860-1 673 (700-1)	900-1 713 (800-1)	1000-2 1/2 813 (900-2 1/2)	1200-3 1013 (1100-3)

REIL Rwys 5 and 31

HIRL Rwy 5-23

MIRL Rwy 13-31

FAF to MAP 5.5 NM

Knots	60	90	120	150	180
Min:Sec	5:30	3:40	2:45	2:12	1:50

NE-2, 07 AUG 2025 to 04 SEP 2025

NE-2, 07 AUG 2025 to 04 SEP 2025