
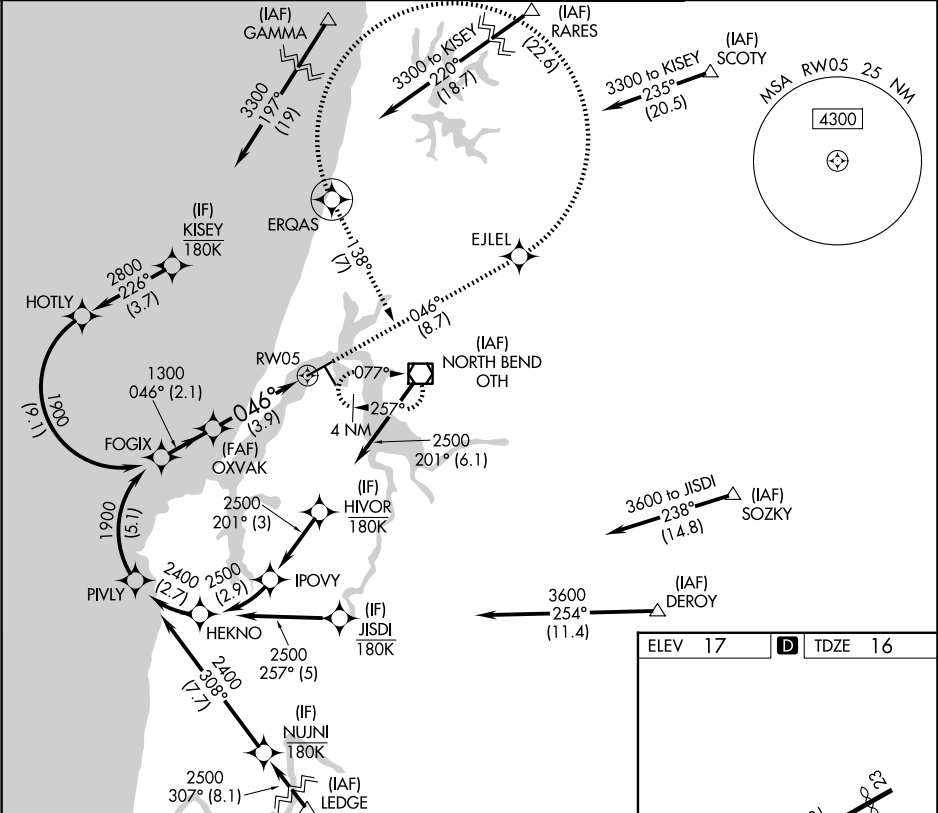


APP CRS	Rwy Ldg	5320
046°	TDZE	16
	Apt Elev	17

RNAV (RNP) Z RWY 5

SOUTHWEST OREGON RGNL (OTH)

RNP AR APCH. RF required.		<div>MALSR</div> <div></div>	MISSED APPROACH: Climb to 3300 on track 046° to EJLEL, left turn to ERQAS, and on track 138° to OTH VOR/DME and hold.
▼ For inop ALS, increase *RNP 0.11 all Cats visibility to 1 SM, #RNP 0.30 all Cats visibility to 1½ SM, and RNP 0.30 all Cats visibility to 1½ SM. For uncompensated Baro-VNAV systems, procedure NA below -2°C or above 54°C.			* Missed approach requires minimum climb of 400 feet per NM to 1200. # Missed approach requires minimum climb of 255 feet per NM to 2400.
AWOS-3PT 135.075	SEATTLE CENTER 127.55 254.35	NORTH BEND TOWER* 118.45 (CTAF) 0	GND CON 127.1



See planview for multiple IF locations.

FOGIX

1900

GP 3.00°

TCH 51

046°

1300

2.1 NM

3.9 NM

ERQAS

tr 138°

OTH

RW05

3300

EJLEL

tr 046°

CATEGORY	A	B	C	D
RNP 0.11 DA*		394-5½	378 (400-½)	
RNP 0.30 DA#		477-1½	461 (500-1½)	
RNP 0.30 DA		569-1½	553 (600-1½)	

AUTHORIZATION REQUIRED

HIRL Rwy 5-23

MIRL Rwy 13-31

REIL Rwys 13, 23 and 31