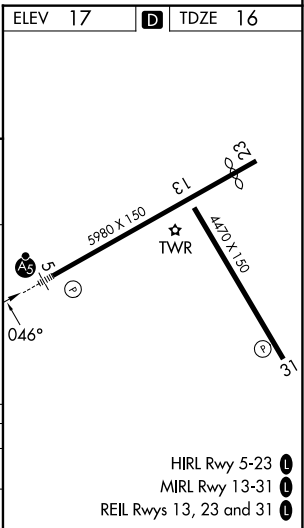
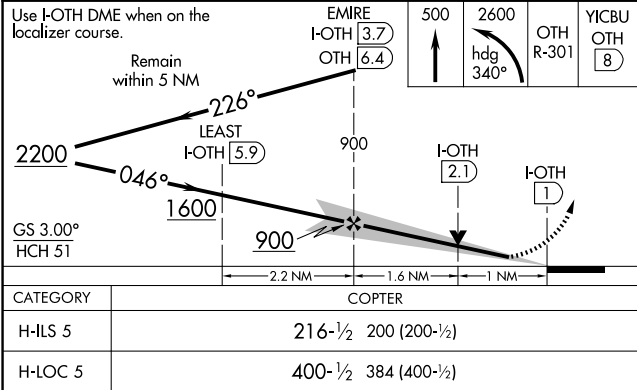
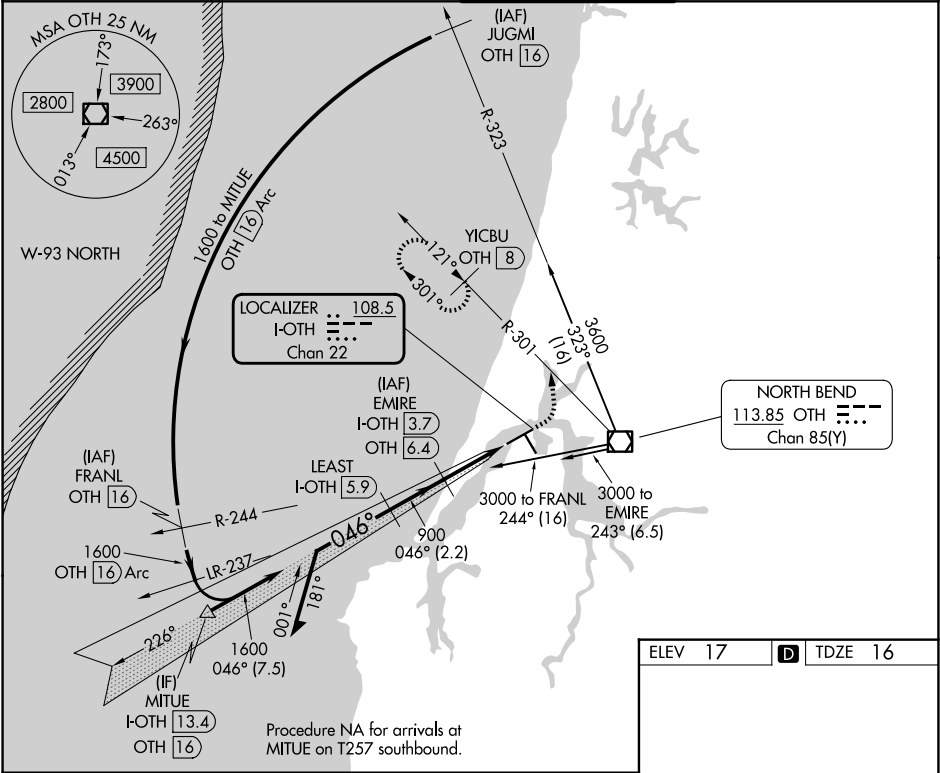


LOC/DME I-OTH	APP CRS	Rwy Ldg	5320
108.5	046°	TDZE	16
Chan 22		Apt Elev	17

COPTER ILS Y or LOC Y RWY 5  
SOUTHWEST OREGON RGNL (OTH)

DME required.	MALSR	MISSED APPROACH: Climb to 500 then climbing left turn to 2600 on heading 340° and OTH VOR/DME R-301 to YICBU/OTH 8 DME and hold, continue climb-in-hold to 2600.

AWOS-3PT 135.075	SEATTLE CENTER 127.55 254.35	NORTH BEND TOWER★ 118.45 (CTAF) 0	GND CON 127.1
---------------------	---------------------------------	--------------------------------------	------------------



NW-1, 07 AUG 2025 to 04 SEP 2025

NW-1, 07 AUG 2025 to 04 SEP 2025