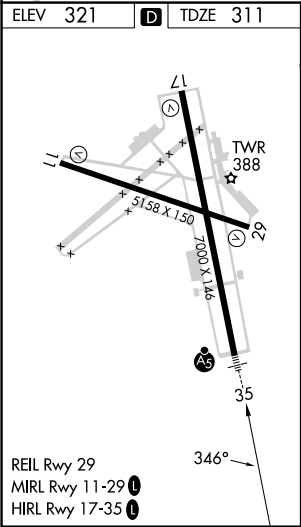
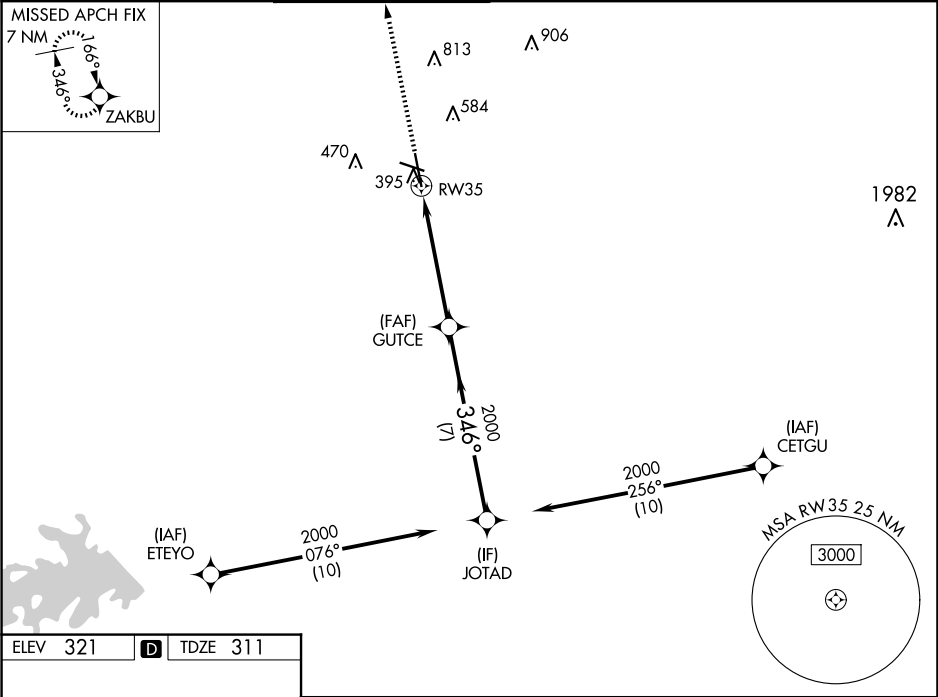


WAAS CH 63122 W35A	APP CRS 346°	Rwy Idg TDZE Apt Elev	6932 311 321
--	------------------------	-----------------------------	---

RNAV (GPS) RWY 35
EASTERWOOD FLD (CLL)

RNP APCH. ⚠ For uncompensated Baro-VNAV systems, LNAV/VNAV NA below -3°C or above 54°C. For inop ALS, increase LPV Cat E and LNAV/VNAV all Cats visibility to ¾ SM, increase LNAV Cat E visibility to 1½ SM.				MALSR ⚠	MISSED APPROACH: Climb to 2100 direct ZAKBU and hold.	
ATIS 126.85	HOUSTON APP CON 134.3 360.85	EASTERWOOD TOWER ★ 118.5 (CTAF) 0 284.7	GND CON 128.7 284.7	CLNC DEL 128.7	CLNC DEL 120.4 (when twr closed)	UNICOM 122.95



2100

↑

ZAKBU

✦

GUTCE

2000

JOTAD

2000

*LNAV only.

*1.3 NM to RW35

1.3 NM

3.9 NM

7 NM

GP 3.00°

TCH 55

346°

2000

CATEGORY	A	B	C	D	E
LPV DA	511-½ 200 (200-½)				
LNAV/VNAV DA	563-½ 252 (300-½)				
LNAV MDA	760-½	449 (500-½)	760-¾	449 (500-¾)	
CIRCLING	860-1 539 (600-1)	880-1 559 (600-1)	1000-2 679 (700-2)	1180-2¾ 859 (900-2¾)	1180-3 859 (900-3)