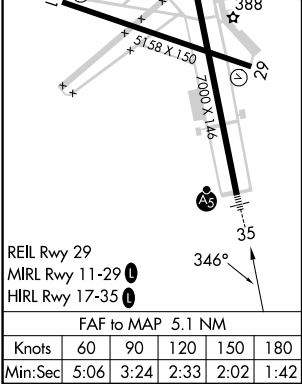
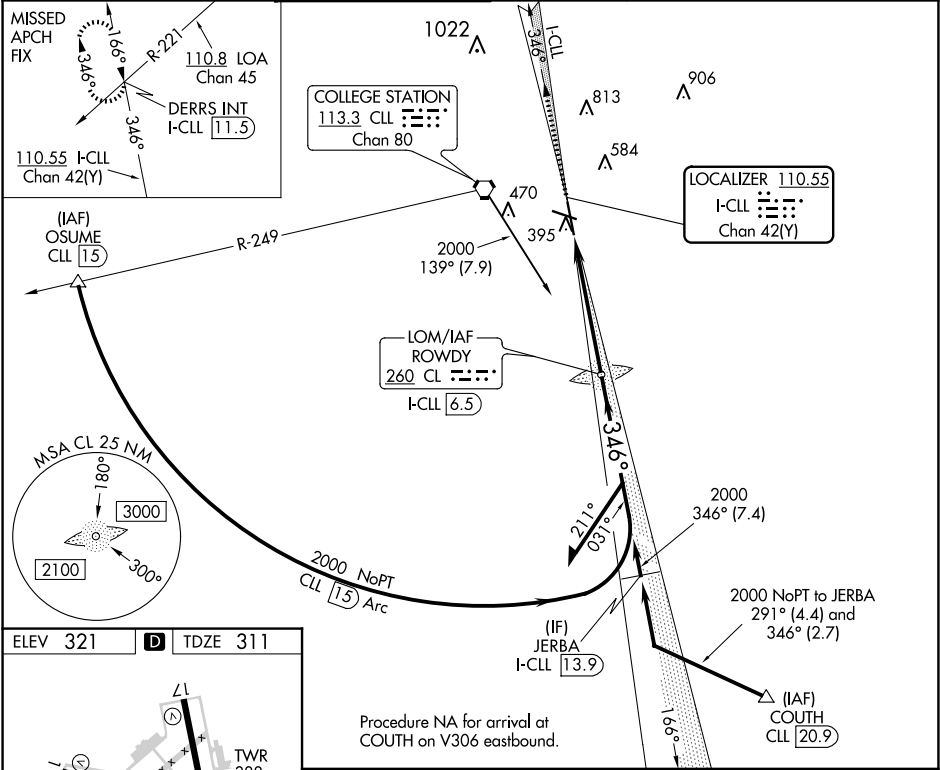


LOC/DME I-CLL 110.55 Chan 42(Y)	APP CRS 346°	Rwy Idg TDZE Apt Elev 6932 311 321
---	------------------------	--

ILS or LOC RWY 35
EASTERWOOD FLD (CLL)

ADF or DME required for procedure entry. ADF or DME required for LOC only.	MALSR 	MISSED APPROACH: Climb to 2500 on I-CLL north course to DERRS INT/I-CLL 11.5 DME and hold.
For inop ALS, increase S-ILS 35 Cat E visibility to 3/4 SM and S-LOC 35 Cat E visibility to 1 1/2 SM. ILS glideslope unusable for coupled approaches below 1050 feet MSL.		

ATIS 126.85	HOUSTON APP CON 134.3 360.85	EASTERWOOD TOWER ★ 118.5 (CTAF) 284.7	GND CON 128.7 284.7	CLNC DEL 128.7	CLNC DEL 120.4 (when twr closed)	UNICOM 122.95
-----------------------	--	---	-------------------------------	--------------------------	---	-------------------------



2500 ↑	I-CLL N crs	DERRS INT	CL LOM ROWDY I-CLL 6.5	Remain within 15 NM	
			1968	176°	
				346°	
			2000	2000	
				GS 2.90° TCH 57	
			Use I-CLL DME when on the localizer course.		
			1.3	3.8 NM	
CATEGORY	A	B	C	D	E
S-ILS 35	511-½		200 (200-½)		
S-LOC 35	760-½ 449 (500-½)		760-⅞ 449 (500-⅞)		
CIRCLING	860-1	880-1	1000-2	1180-2¾	1180-3
	539 (600-1)	559 (600-1)	679 (700-2)	859 (900-2¾)	859 (900-3)

SC-5, 07 AUG 2025 to 04 SEP 2025

SC-5, 07 AUG 2025 to 04 SEP 2025