

VOR/DME LRP	APP CRS	Rwy Ldg
117.3	090°	6118
Chan 120		TDZE 399
		Apt Elev 403

VOR/DME RWY 8

LANCASTER (LNS)

⚠

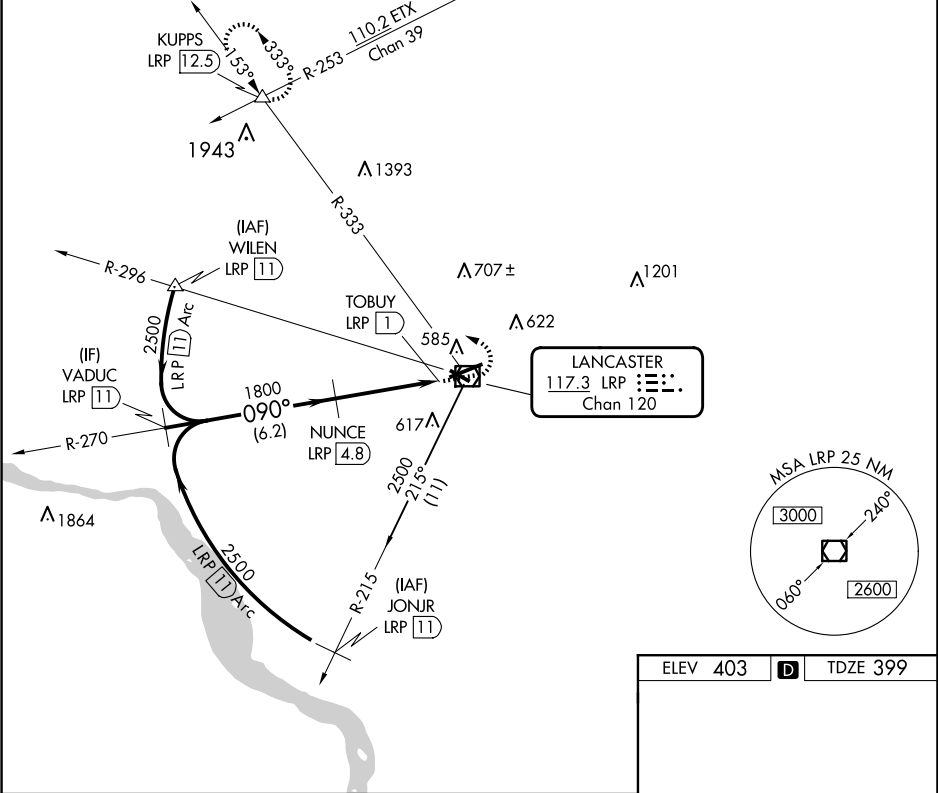
⚠

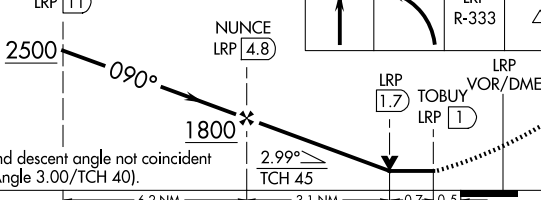
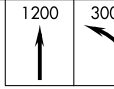
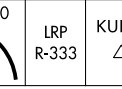
Circling Rwy 13, 31 NA at night. Inop table does not apply.
When local altimeter setting not received, use Harrisburg
Intl altimeter setting and increase all MDA 80 feet, and S-8
and Circling Cats C and D visibility ¼ mile.

MALSR

MISSED APPROACH: Climb to 1200 then
climbing left turn to 3000 via LRP VOR/DME
R-333 to KUPPS INT/LRP 12.5 DME and hold.

ATIS	HARRISBURG APP CON	LANCASTER TOWER★	GND CON	UNICOM
125.675	126.45 281.525	120.9 (CTAF) 251.1	121.8	122.95



					
VGSI and descent angle not coincident (VGSI Angle 3.00/TCH 40).		6.2 NM		3.1 NM	
CATEGORY	A	B	C	D	
S-8	820-1	421 (500-1)	820-1¼	421 (500-1¼)	
CIRCLING	940-1	537 (600-1)	960-1½ 557 (600-1½)	1060-2 657 (700-2)	

