

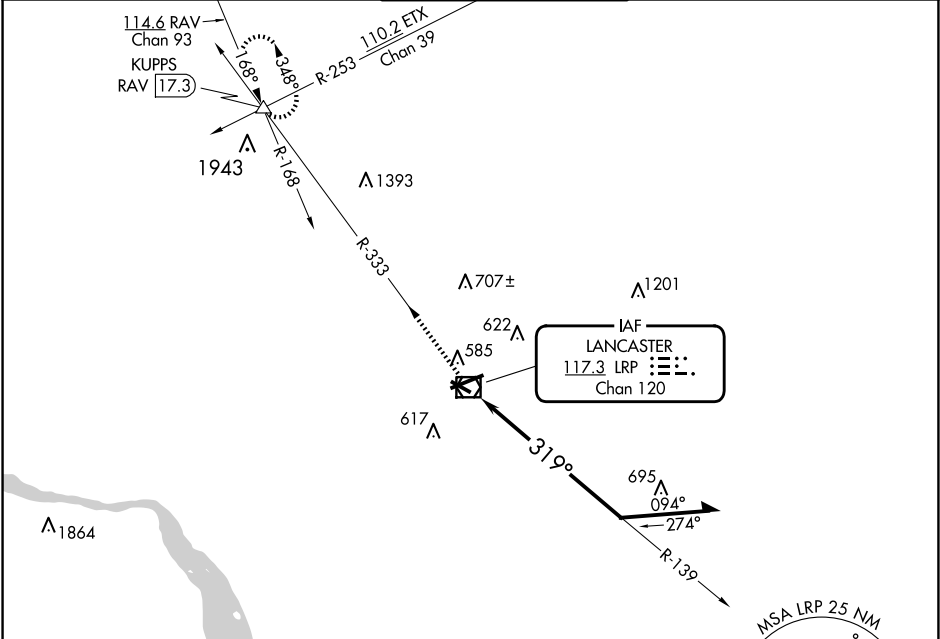
VOR/DME LRP	APP CRS	Rwy Ldg	4102
117.3	319°	TDZE	403
Chan 120		Apt Elev	403

VOR RWY 31

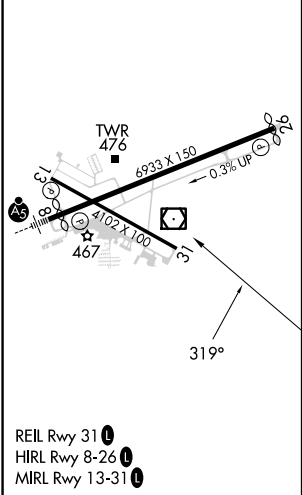
LANCASTER (LNS)

<div><div>▼</div><div>▲</div></div> <div>Night landing: Rwy 13, 31 NA. Helicopter visibility reduction below 1 SM NA.</div>	MISSED APPROACH: Climb to 3000 via LRP VOR/DME R-333 to KUPPS INT/RAV 17.3 DME and hold.
---	---

ATIS	HARRISBURG APP CON	LANCASTER TOWER★	GND CON	UNICOM
125.675	126.45 281.525	120.9 (CTAF) 251.1	121.8	122.95



ELEV 403	D	TDZE 403
----------	---	----------



3000	LRP R-333	KUPPS △	LRP VOR/DME	Remain within 10 NM
			139°	2500
			319°	
CATEGORY	A	B	C	D
S-31	1060-1	657 (700-1)	1060-1¾ 657 (700-1¾)	1060-2 657 (700-2)
CIRCLING	1060-1	657 (700-1)	1060-1¾ 657 (700-1¾)	1080-2¼ 677 (700-2¼)

NE-4, 07 AUG 2025 to 04 SEP 2025

NE-4, 07 AUG 2025 to 04 SEP 2025