

WAAS CH 42723 W13A	APP CRS 128°	Rwy Idg TDZE Apt Elev	4102 402 403
--	------------------------	-----------------------------	---

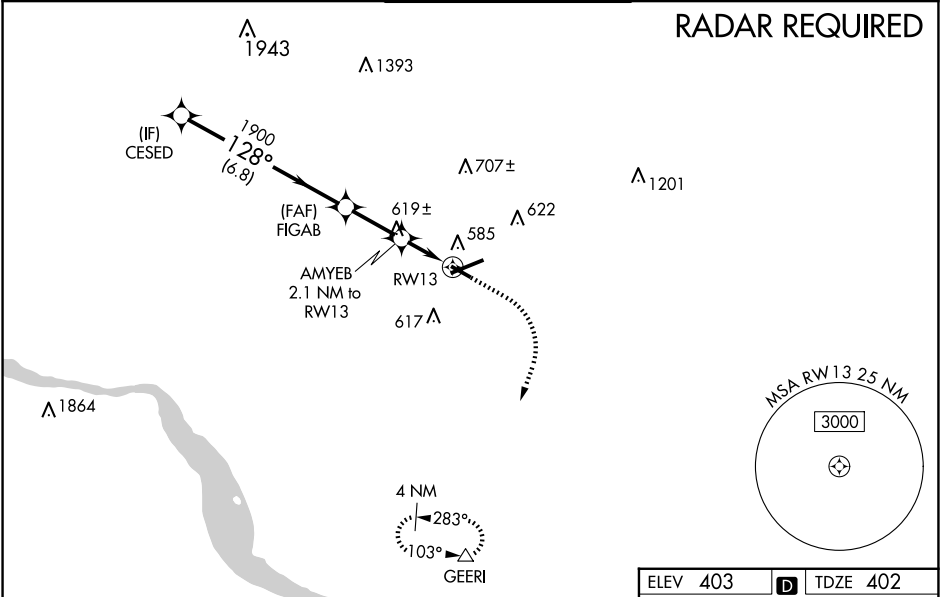
RNAV (GPS) RWY 13

LANCASTER (LNS)

Night landing: Rwy 13, 31 NA. Baro-VNAV NA when using Harrisburg Intl altimeter setting. For uncompensated Baro-VNAV systems, LNAV/VNAV NA below -15°C (5°F) or above 31°C (87°F). DME/DME RNP-0.3 NA. Helicopter visibility reduction below 1 SM NA. When local altimeter setting not received, use Harrisburg Intl altimeter setting and increase all DA 64 feet and all MDA 80 feet; increase LPV and LNAV/VNAV visibility all Cats ½, and LNAV and Circling Cats C and D ¼.

MISSED APPROACH:
Climb to 900 then climbing right turn to 3000 direct GEERI and hold

ATIS 125.675	HARRISBURG APP CON 126.45 281.525	LANCASTER TOWER ★ 120.9 (CTAF) 251.1	GND CON 121.8	UNICOM 122.95
------------------------	---	---	-------------------------	-------------------------



VGSI and RNAV glidepath not coincident (VGSI Angle 3.00/TCH 40).					<div><div><div>900</div><div>↑</div></div><div><div>3000</div><div></div></div><div><div>GEERI</div><div>△</div></div></div>	
<div><div>CESED</div><div>3000</div><div>128°</div><div>FIGAB</div><div>1900</div><div>AMYEB</div><div>2.1 NM to RW13</div><div>RW13</div><div>*1140</div><div>GP 3.10° TCH 60</div><div>1900</div><div>6.8 NM</div><div>2.3 NM</div><div>2.1 NM</div><div>*LNAV only</div></div>					<div><div>128°</div><div>TWR</div><div>476</div><div>6933 X 150</div><div>0.3% UP</div><div>467</div><div>4102 X 100</div><div>31</div></div>	
CATEGORY	A		B	C	D	
LPV DA			687-1	285 (300-1)		
LNAV/ VNAV DA			894-1½	492 (500-1½)		
LNAV MDA	880-1 478 (500-1)		880-1¾ 478 (500-1¾)			
CIRCLING	940-1 537 (600-1)		960-1½ 557 (600-1½)		1060-2 657 (700-2)	
					REIL Rwy 31 1 HIRL Rwy 8-26 1 MIRL Rwy 13-31 1	