

| | | | |
|--|------------------------|-----------------------------|---|
| WAAS CH 87019 W32A | APP CRS 325° | Rwy Idg TDZE Apt Elev | 6306 2120 2143 |
|--|------------------------|-----------------------------|---|

RNAV (GPS) RWY 32

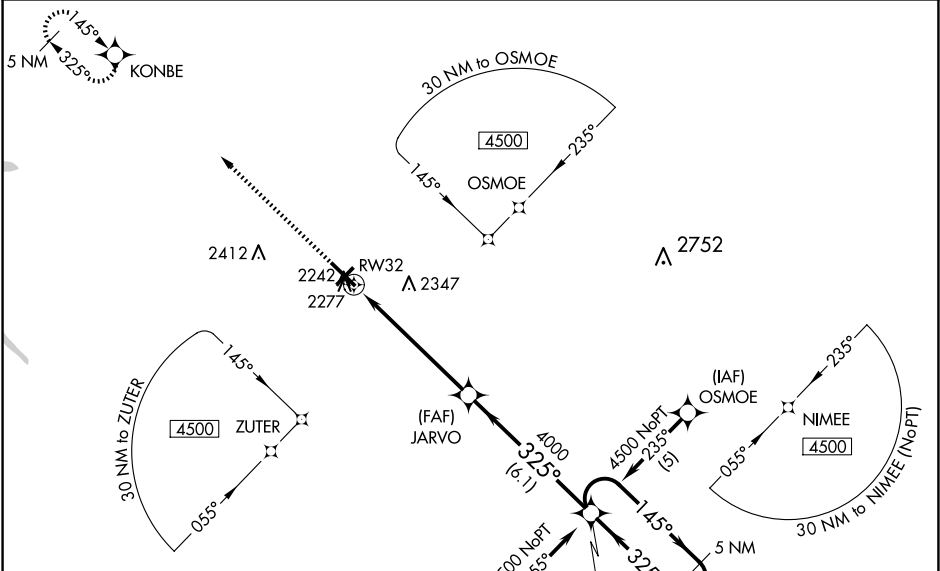
BRADFORD RGNL (BFD)

⚠ For uncompensated Baro-VNAV systems, LNAV/VNAV NA below -19°C (-2°F) or above 54°C (130°F). Baro-VNAV and VDP NA when using St. Marys altimeter setting. DME/DME RNP-0.3 NA. Inop table does not apply to LPV and LNAV Cats A/B. For inop MALSR, increase LNAV/VNAV all Cats visibility to 1½ mile and LNAV Cats C/D visibility to 1¼ mile. When local altimeter setting not received, use St. Marys altimeter setting: increase LPV DA to 2455 feet; increase LNAV/VNAV DA to 2685 feet and all visibilities ¼ SM; increase all MDAs 100 feet and Circling Cat C visibility ½ SM and Cat D ¼ SM. For inop MALSR, when using St. Marys altimeter setting, increase LPV all Cats visibility to 1½ mile.

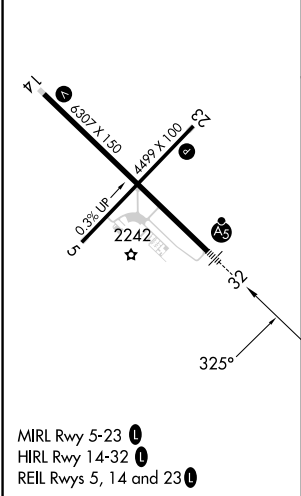
MALSR

MISSED APPROACH:
Climb to 4500 direct
KONBE and hold.

| | | |
|------------------------|---|-----------------------------------|
| ASOS 133.825 | CLEVELAND CENTER 124.325 353.85 | UNICOM 123.075 (CTAF) 0 |
|------------------------|---|-----------------------------------|



| | | |
|-----------|----------|-----------|
| ELEV 2143 | D | TDZE 2120 |
|-----------|----------|-----------|



| | | | | |
|--------------|-----------------|-------------|-------------------------|-----------------------|
| 4500 | KONBE | JARVO | NIMEE | 5 NM Holding Pattern |
| *LNAV only. | | | | |
| RW32 | *1.2 NM to RW32 | 4000 | 4500 | GP 3.00° TCH 52 |
| 1.2 NM | 4.5 NM | 6.1 NM | | |
| CATEGORY | A | B | C | D |
| LPV DA | | 2370-1 | 250 (300-1) | |
| LNAV/VNAV DA | | 2600-1½ | 480 (500-1½) | |
| LNAV MDA | | 2540-1 | 420 (400-1) | |
| CIRCLING | 2620-1 | 477 (500-1) | 2720-1½ 577 (600-1½) | 2760-2 617 (700-2) |