

| | | |
|-----------|----------|-----------|
| TACAN NTD | APCH CRS | Rwy ldg |
| Chan 43 | 026° | 11,102 |
| | | TDZE |
| | | 10 |
| | | Arpt Elev |
| | | 13 |

[USN]

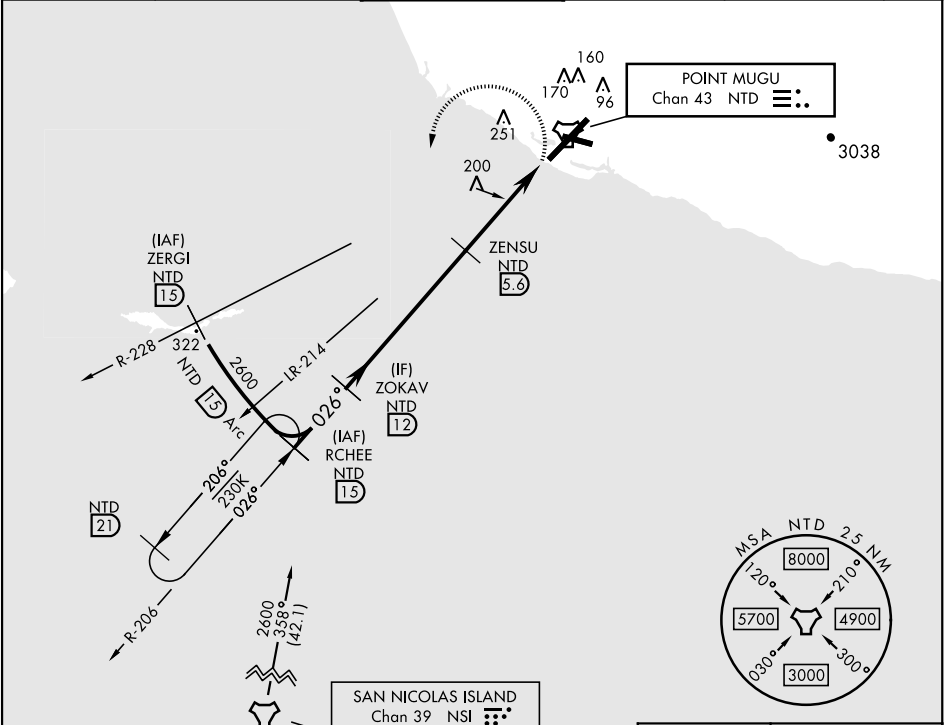
TACAN Z RWY 3
POINT MUGU NAS
(NAVAL BASE VENTURA CO)(KNTD)

▼ *When ALS inop, increase CAT AB vis to 1 mile,
CAT CDE vis to 1½ miles.
**Circling not authorized E of Rwy 3-21.

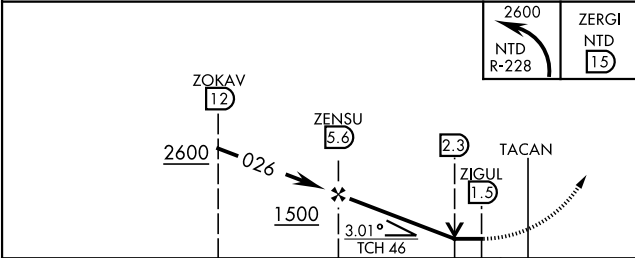
SALSF
A2

MISSED APPROACH: Climbing left turn to 2600. Intercept
the NTD TACAN R-228, then via NTD R-228 to ZERGI, Arc
SW of NTD via the 15 DME arc to RCHEE and hold.

| | | | | | |
|---------------|--------------------|--------------------|-------------|---------------|-------------|
| ATIS ★ | POINT MUGU APP CON | POINT MUGU TOWER ★ | GND CON | CLNC DEL | ASR/ PAR |
| 125.55 363.05 | 128.65 307.275 | 124.85 290.375 | 121.6 360.2 | 120.75 279.55 | |

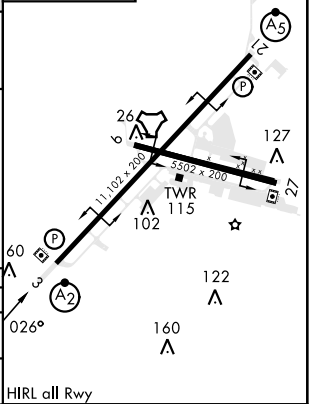


EMERG SAFE ALT 100 NM 12,100



| CATEGORY | A | B | C | D | E |
|-------------|-------------------|-------------------|---------------------|-------------------|----|
| S-3 * | 460-¾ 450 (500-¾) | | 460-1 450 (500-1) | | |
| CIRCLING ** | 460-1 447 (500-1) | 480-1 467 (500-1) | 480-1½ 467 (500-1½) | 580-2 567 (600-2) | NA |

| |
|---------|
| ELEV 13 |
| TDZE 10 |



SW-3, 07 AUG 2025 to 04 SEP 2025

SW-3, 07 AUG 2025 to 04 SEP 2025