

OXNARD, CALIFORNIA

APCH CRS 212°	Rwy Idg 11,102 TDZE 13 Arpt Elev 13
------------------	---

- (USN)

POINT MUGU NAS (NAVAL BASE VENTURA CO) (KNTD)

## RNAV (GPS) RWY 21

RNP APCH

**T** \* When ALS inop, increase vis to 7/8 mile.

\*\* When ALS inop. increase CAT AB vis to 1 mile: CAT CD vis to 1 3/8 miles.



**MISSED APPROACH:** Climb to 600 then climbing left turn to 2600 direct RENET and hold.

ATIS★  
125.55 363.05

APP CON/DEP CON  
128.65 307.275

TOWER★  
124.85 290.3

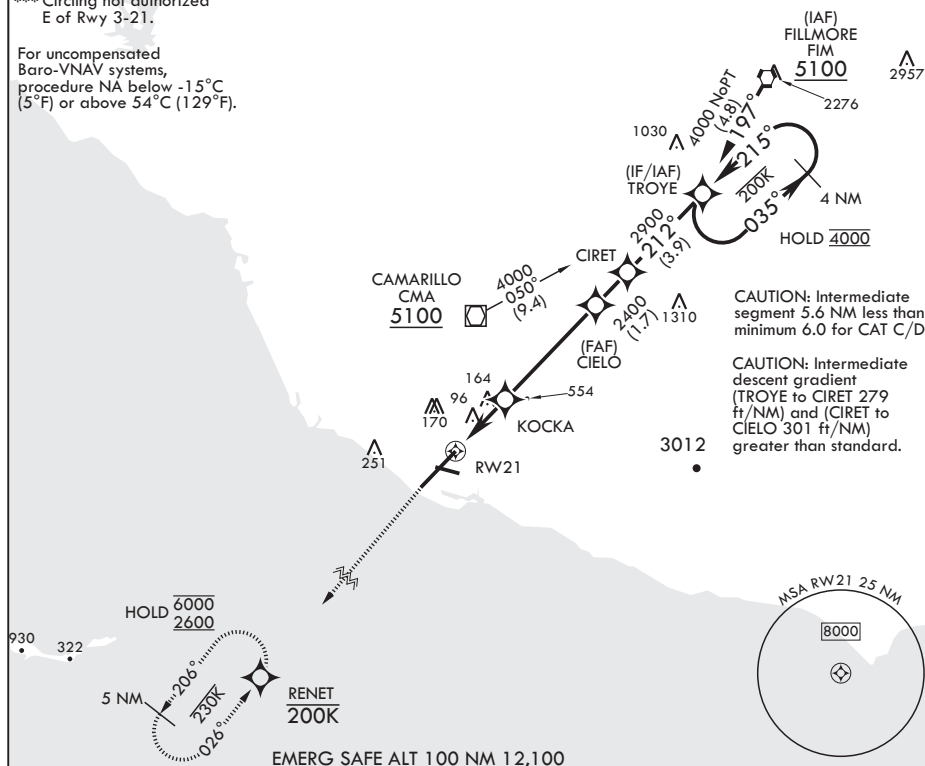
GND CON  
121.6 360.2

CLNC DEL  
120.75 279.5

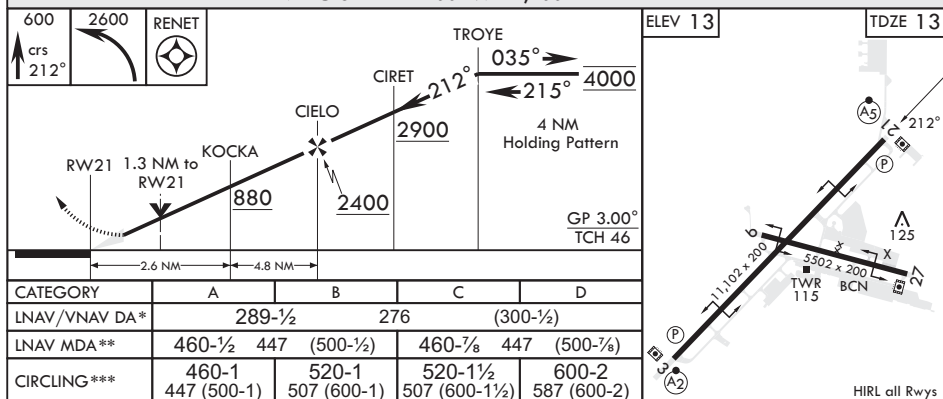
ASR/PAR

\*\*\* Circling not authorized  
E of Rwy 3-21.

For uncompensated Baro-VNAV systems, procedure NA below -15°C (5°F) or above 54°C (129°F).



EMERG SAFE ALT 100 NM 12.100

HIRE all R<sub>w</sub>

OXNARD, CALIFORNIA

34°07'N - 119°07'W POINT MUGU NAS (NAVAL BASE VENTURA CO) (KNTD)

Amdt 7 29DEC22

## RNAV (GPS) RWY 21

SW-3, 07 AUG 2025 to 04 SEP 2025

SW-3, 07 AUG 2025 to 04 SEP 2025