

HI-TACAN Z RWY 21

TACAN Chan 43	APCH CRS 216°	Rwy Idg 11,102 TDZE 13 Arpt Elev 13
-------------------------	-------------------------	--

[USN]

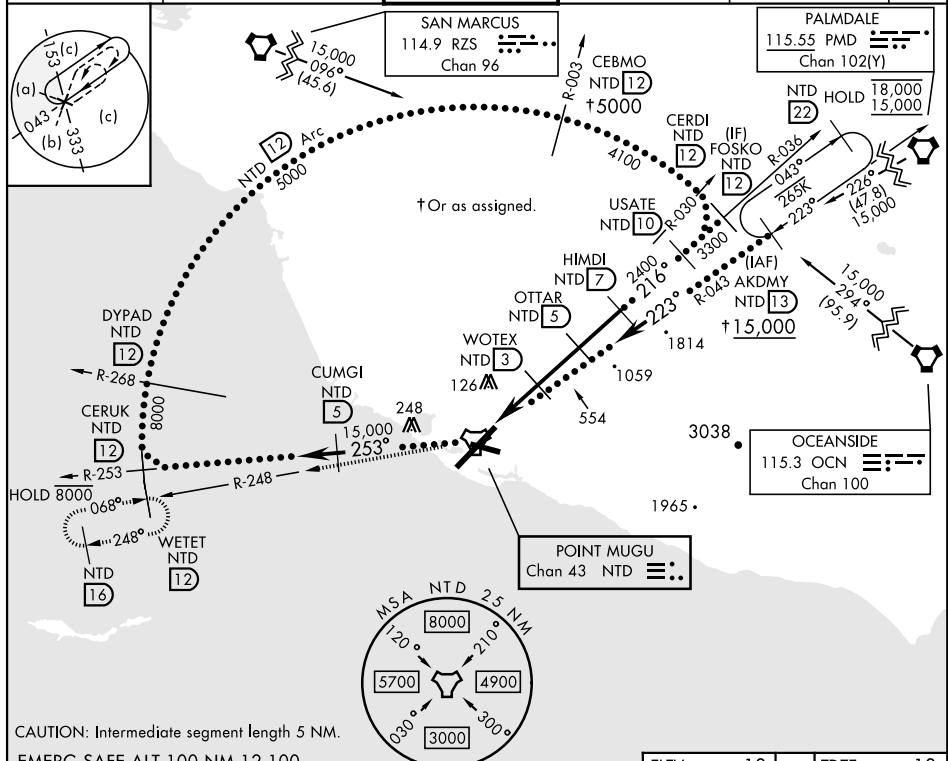
POINT MUGU NAS
(NAVAL BASE VENTURA CO) (KNTD)

▼ * When ALS inop, increase vis to 1½ miles.
** Circling not authorized E of Rwy 3-21.



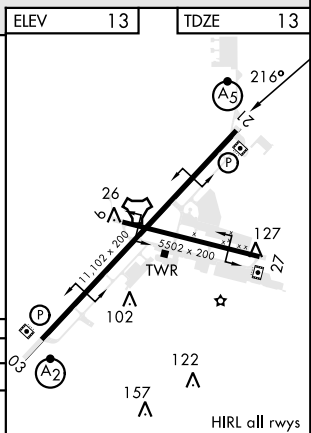
MISSED APPROACH: Climb to 5000 via NTD TACAN R-036 to NTD, then via NTD R-248 to WETET and hold, continue climb-in-hold to 5000.

ATIS ★ 125.55 363.05	POINT MUGU APP CON 128.65 307.275	POINT MUGU TOWER★ 124.85 290.375	GND CON 121.6 360.2	CLNC DEL 120.75 279.55	ASR/ PAR
--------------------------------	---	--	-------------------------------	----------------------------------	-------------



CAUTION: Intermediate segment length 5 NM.
EMERG SAFE ALT 100 NM 12,100

5000 NTD R-036	NTD R-248	WETET NTD 12	VGSI and descent angle not coincident.
NTD TACAN	WOTEX NTD 3	OTTAR NTD 5	HIMDI NTD 7
ZATPO NTD 1.6	USATE NTD 10	FOSKO NTD 12	
860	1500	2400	3300
1.4 NM	2 NM	2 NM	
CATEGORY	C	D	E
S-21*	480-1	467 (500-1)	
CIRCLING**	480-1½ 467 (500-1½)	580-2 567 (600-2)	860-3 847 (900-3)



HI-TACAN Z RWY 21