

VOR/DME LAW <b><u>116.85</u></b> Chan <b>115(Y)</b>	APP CRS <b>349°</b>	Rwy Idg <b>8599</b> TDZE <b>1089</b> Apt Elev <b>1110</b>
---	------------------------	---

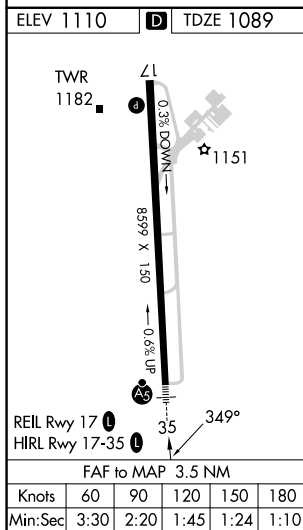
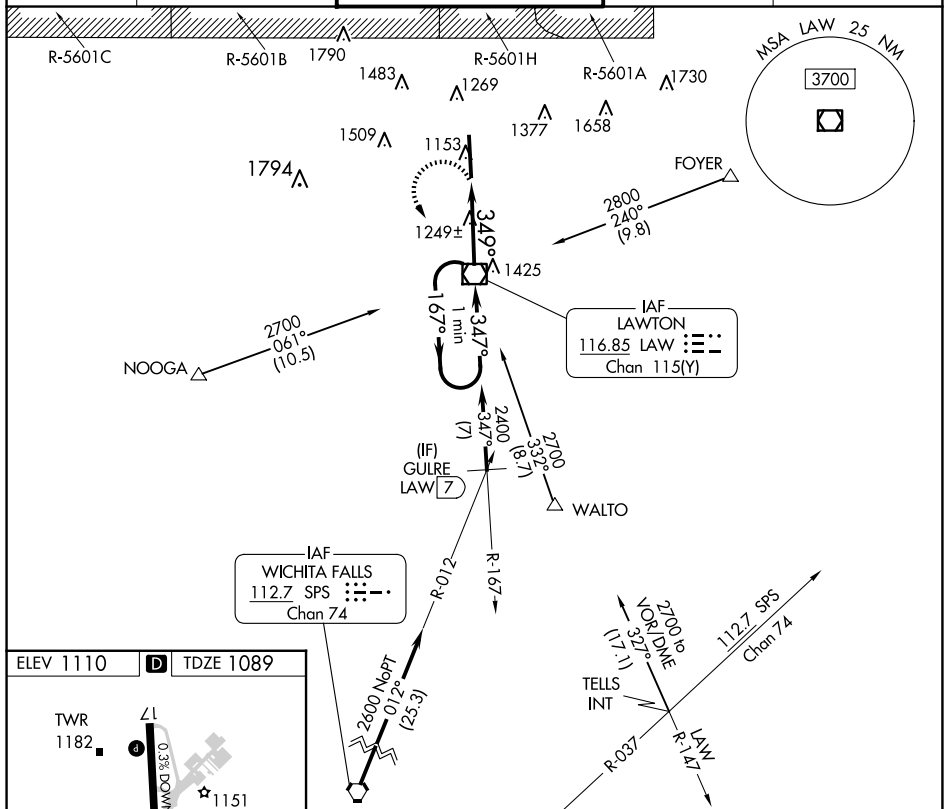
VOR RWY 35  
LAWTON-FORT SILL RGNL (LAW)

**A** For inop ALS, increase Cat C/D visibility to 1½ SM.



**MISSED APPROACH:** Climbing left turn to 2800 direct LAW VOR/DME and hold, continue climb-in-hold to 2800.

ATIS <b>120.75</b>	FORT SILL APP CON <b>120.55 322.4</b>	LAWTON TOWER ★ <b>119.9(CTAF) 257.8</b>	GND CON <b>121.9</b>	UNICOM <b>122.95</b>
-----------------------	--	--	-------------------------	-------------------------



CATEGORY	A	B	C	D
S-35	1500-½	411 (500-½)	1500-¾	411 (500-¾)
<b>C</b> CIRCLING	1620-1	510 (600-1)	1820-2 710 (800-2)	1820-2½ 710 (800-2½)