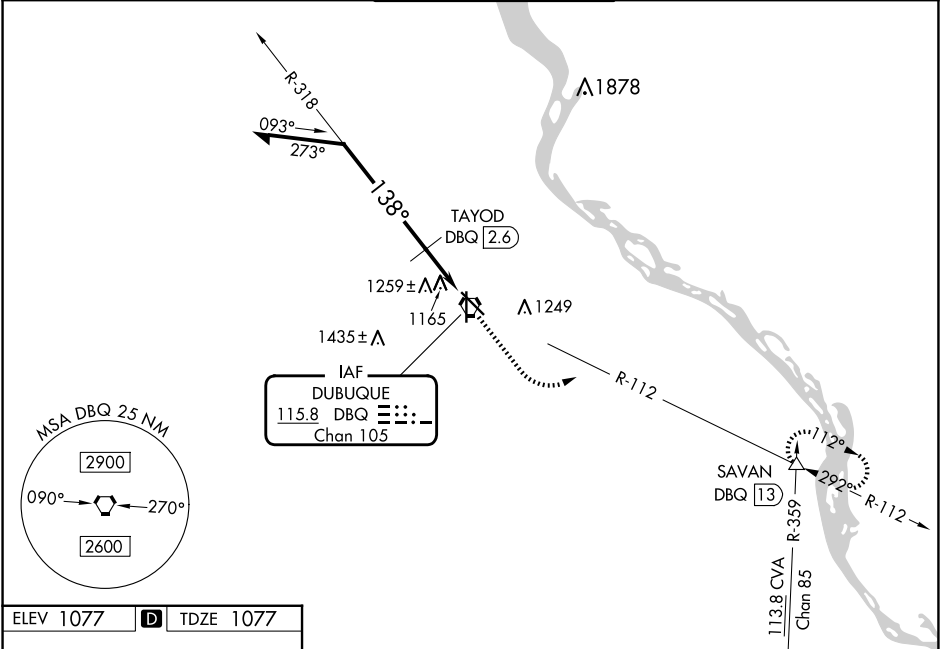


VORTAC DBQ	APP CRS	Rwy Idg	6502
115.8	138°	TDZE	1077
Chan 105		Apt Elev	1077

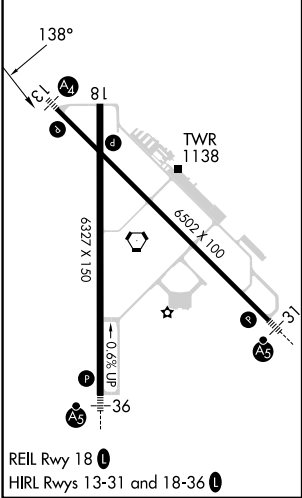
VOR RWY 13  
DUBUQUE RGNL (DBQ)

Inop table does not apply to Cat C. If local altimeter setting not received, use Monticello altimeter setting and increase all MDAs 100 feet. VDP NA when using Monticello altimeter setting.	MALS 	MISSED APPROACH: Climb to 2500 then climbing left turn to 3300 via DBQ VORTAC R-112 to SAVAN INT/13 DME and hold.
---	----------	---

ATIS 127.25	CHICAGO CENTER 133.95 281.4	DUBUQUE TOWER ★ 119.5 (CTAF) 254.4	GND CON 121.8	UNICOM 122.95
----------------	--------------------------------	---------------------------------------	------------------	------------------



ELEV 1077	D	TDZE 1077
-----------	---	-----------



VGSI and descent angles not coincident (VGSI Angle 3.00/TCH 44).		DBQ VORTAC		2500 ↑	3300 DBQ R-112	SAVAN △
Remain within 10 NM		318°		*1880 when using Monticello altimeter setting.		
2800		138°				
TAYOD DBQ (2.6)		DBQ (1.8)				
*1780		3.03°				
TCH 50						
0.8 NM		1.3 NM		0.6		
CATEGORY	A		B	C	D	
S-13	1780-¾	703 (800-¾)	1780-2 703 (800-2)	1780-2 ¼ 703 (800-2 ¼)		
CIRCLING	1780-1	703 (800-1)	1780-2 703 (800-2)	1800-2 ¼ 723 (800-2 ¼)		
TAYOD FIX MINIMUMS						
S-13	1520-¾	443 (500-¾)	1520-1 ¼ 443 (500-1 ¼)	1520-1 ½ 443 (500-1 ½)		
CIRCLING	1580-1	503 (600-1)	1600-1 ½ 523 (600-1 ½)	1800-2 ¼ 723 (800-2 ¼)		