

TACAN Z RWY 17R

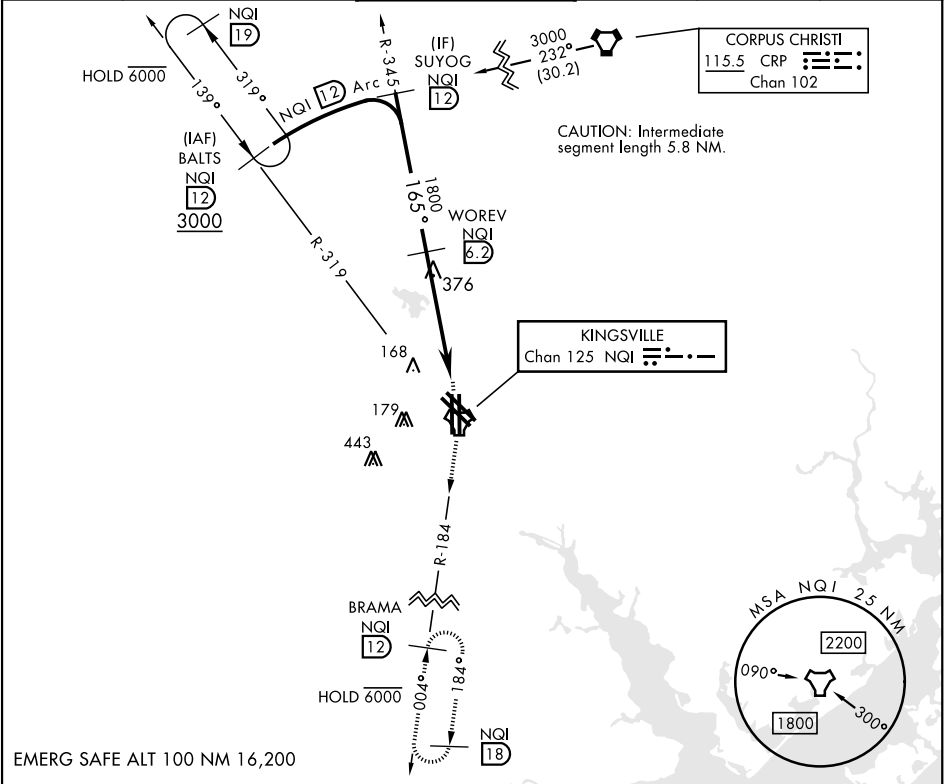
TACAN	NQI	APCH CRS	Rwy Idg	8000
Chan	125	165°	TDZE	49
			Arprt Elev	50

[USN]

KINGSVILLE NAS (KNQI)

MISSED APPROACH: Climb to 3000 direct NQI TACAN and climbing right turn to intercept NQI R-184 to BRAMA and hold.

ATIS ★ 282.25	APP CON 119.9 290.45	TOWER ★ 124.1 377.05	GND CON 239.05	CLNC DEL 328.4	ASR/PAR
------------------	-------------------------	-------------------------	-------------------	-------------------	---------



EMERG SAFE ALT 100 NM 16,200

3000

NQI

BRAMA

NQI 12

SUYOG

R-345

NQI 12

WOREV

NQI 6.2

OTOBE

NQI 3.3

JOXAP

NQI 1.4

TACAN

NQI 1.2

1800

165°

1800

3.05°

TCH 50

860

2.9 NM

1.9 NM

CATEGORY	A	B	C	D
S-17R	400-1	351	(400-1)	
CIRCLING	540-1	490 (500-1)	760-2 710 (800-2)	760-2¼ 710 (800-2¼)

ELEV 50

TDZE 49

165°

131.13R

131.13L

8000 x 198

8000 x 198

35L 35R

35L 35R

A1

TWR 150

145

HIRL all rwys

REIL all rwys

TDZL/CL Rwy 17L

TACAN Z RWY 17R

SC-3, 07 AUG 2025 to 04 SEP 2025

SC-3, 07 AUG 2025 to 04 SEP 2025