

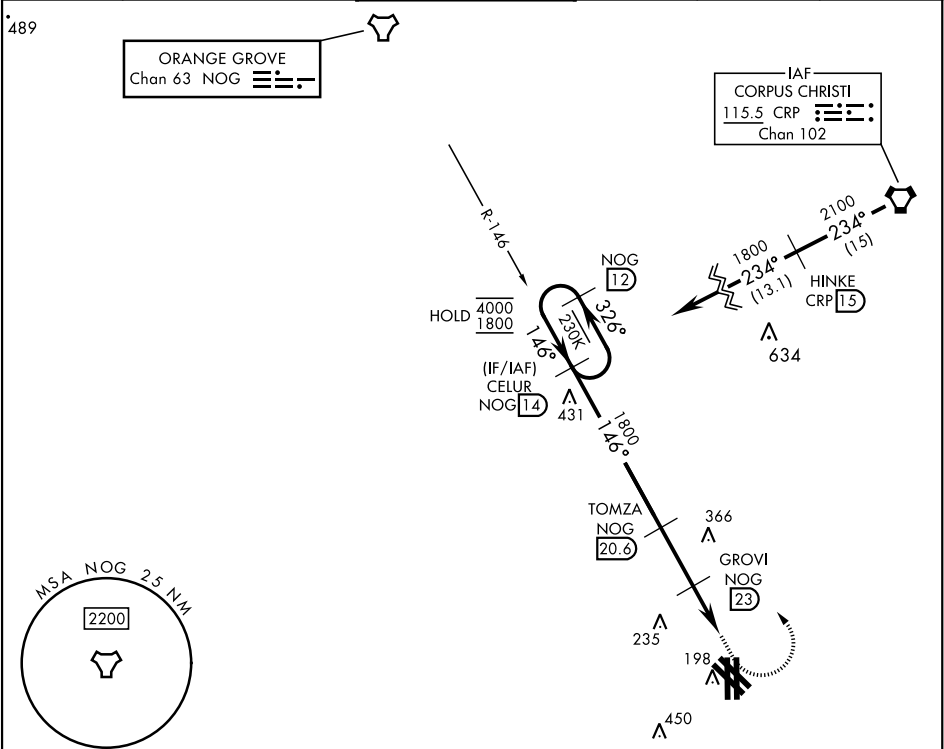
TACAN Y RWY 17R

TACAN	NOG	APCH CRS	Rwy Idg	8000
Chan 63		146°	TDZE	49
			Arprt Elev	50

[USN]

KINGSVILLE NAS (KNQI)

MISSED APPROACH: Climbing left turn to 1800, intercept NOG TACAN R-146 to CELUR and hold.		TOWER ★		GND CON	CLNC DEL	ASR/PAR
ATIS ★	APP CON	124.1 377.05		239.05	328.4	
282.25	119.9 290.45	124.1 377.05		239.05	328.4	



EMERG SAFE ALT 100 NM 16,200		ELEV 50		TDZE 49
NOG 12		CELUR NOG 14		1800 NOG R-146
4000 1800		146°		146°
326°		1800		GROVI NOG 23
1020		3.01°		TCH 50
2.4 NM		2.5 NM		0.5
CATEGORY	A	B	C	D
S-17R	520-1	471 (500-1)	520-13 471 (500-13)	
CIRCLING	540-1	490 (500-1)	760-2 710 (800-2)	760-2 710 (800-2)
HIRL all rws		REIL all rws		TDZL/CL Rwy 17L
35L 35R		A1		

TACAN Y RWY 17R

SC-3, 07 AUG 2025 to 04 SEP 2025

SC-3, 07 AUG 2025 to 04 SEP 2025