

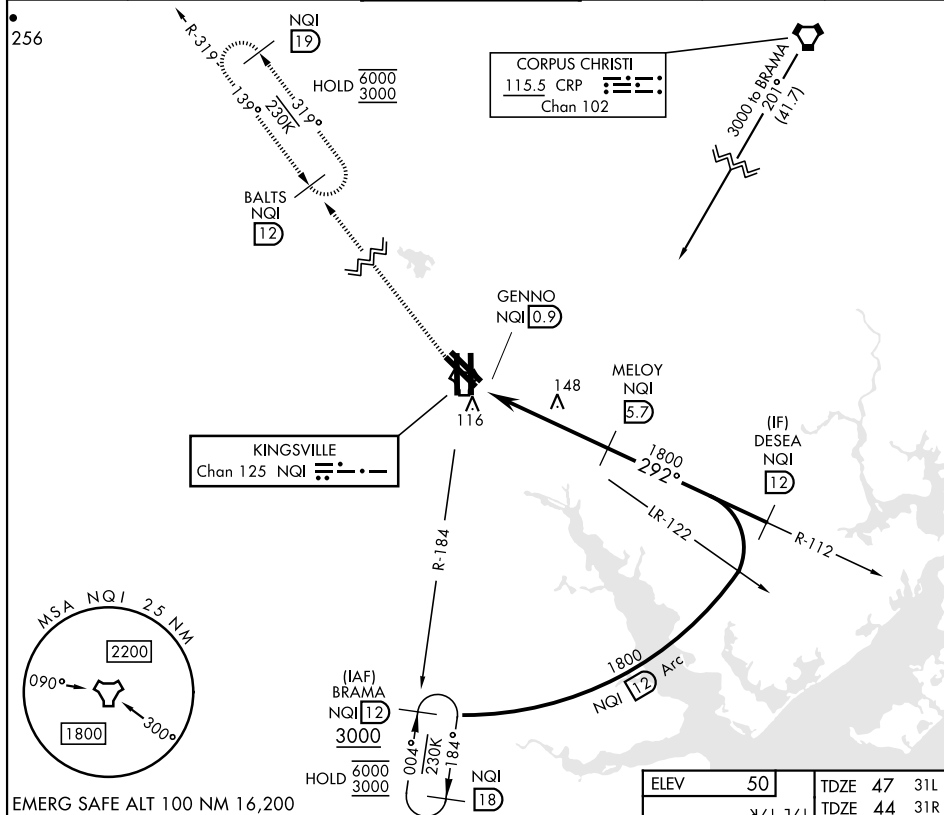
TACAN NQI Chan <b>125</b>	APCH CRS <b>292°</b>	Rwy 31L Idg <b>8000</b> TDZE <b>47</b> Arpt Elev <b>50</b>	Rwy 31R Idg <b>8000</b> TDZE <b>44</b> Arpt Elev <b>50</b>
------------------------------	-------------------------	--	--




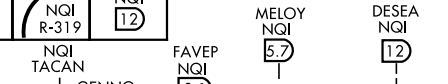

[USN]

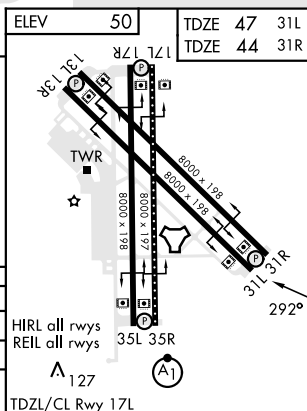
KINGSVILLE NAS (KNQI)

**MISSED APPROACH:** Climb to 3000 direct NQI TACAN and climbing right turn to intercept NQI R-319 to BALTS and hold. Continue climb-in-hold to 3000.

ATIS ★ 282.25	APP CON 119.9 290.45	TOWER ★ 124.1 377.05	GND CON 239.05	CLNC DEL 328.4	ASR/PAR
------------------	-------------------------	-------------------------	-------------------	-------------------	---------



3000 NQI 	 NQI R-319	BALTS NQI  12		
CATEGORY	A	B	C	D
S-31L	380-1		333 (400-1)	
S-31R	380-1		336 (400-1)	
 CIRCLING	540-1	490 (500-1)	760-2 710 (800-2)	760-2½ 710 (800-2½)



KINGSVILLE, TEXAS

27°30'N-97°49'W

KINGSVILLE NAS (KNQI)

Amdt 2 26DEC24

TACAN RWY 31L/R

SC-3, 07 AUG 2025 to 04 SEP 2025