

KINGSVILLE, TEXAS

HI-TACAN Z RWY 35R

TACAN NQI	APCH CRS	Rwy Idg	8000
Chan 125	004°	TDZE	48
		Arpt Elev	50

[USN]

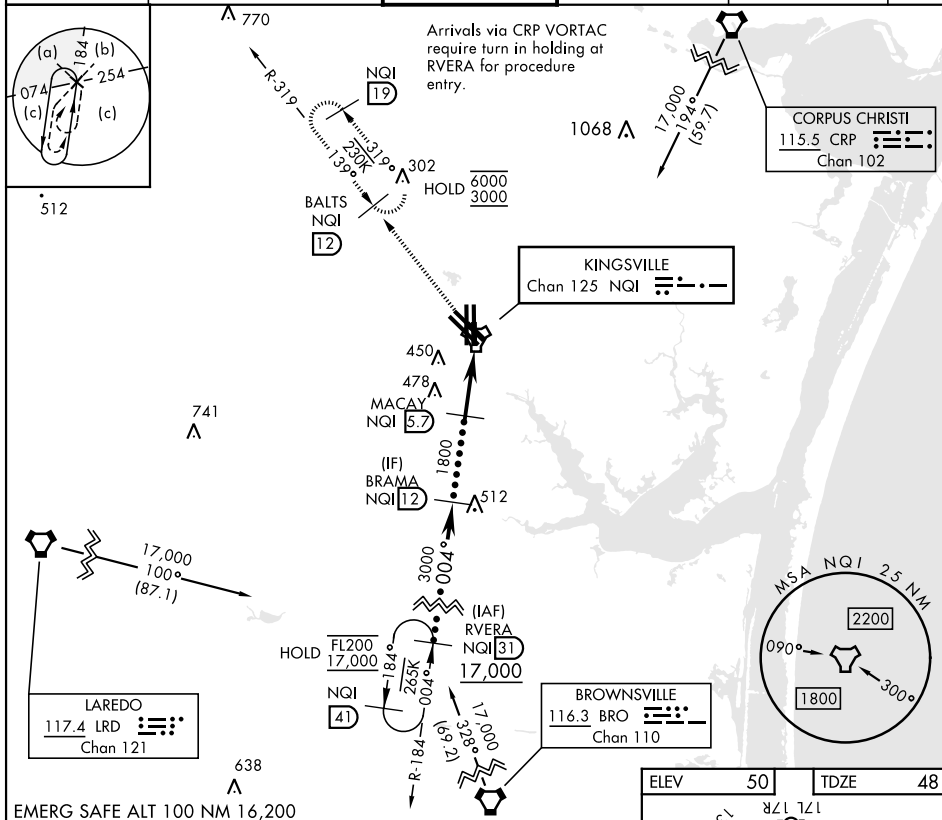
KINGSVILLE NAS (KNQI)

* When ALS inop, increase CAT CDE vis to 1 mile.

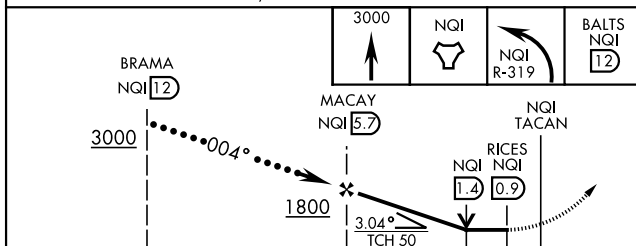
ALSF-1

MISSED APPROACH: Climb to 3000 direct NQI TACAN and climbing left turn to intercept NQI R-319 to BALTS and hold. Continue climb-in-hold to 3000.

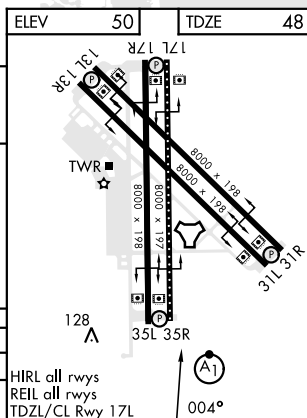
ATIS ★ 282.25	APP CON 119.9 290.45	TOWER ★ 124.1 377.05	GND CON 239.05	CLNC DEL 328.4	ASR/ PAR
------------------	-------------------------	-------------------------	-------------------	-------------------	-------------



EMERG SAFE ALT 100 NM 16,200



		4.8 NM		0.3
CATEGORY	C	D	E	
S-35R *	420- $\frac{3}{4}$		372	(400- $\frac{3}{4}$)
C CIRCLING	760-2 710 (800-2)	760-2 $\frac{1}{4}$ 710 (800-2 $\frac{1}{4}$)	760-2 $\frac{1}{2}$ 710 (800-2 $\frac{1}{2}$)	



KINGSVILLE, TEXAS

27°30'N-97°49'W

KINGSVILLE NAS (KNQI)

HI-TACAN Z RWY 35R

Orig 26DEC24

SC-3, 07 AUG 2025 to 04 SEP 2025

SC-3, 07 AUG 2025 to 04 SEP 2025