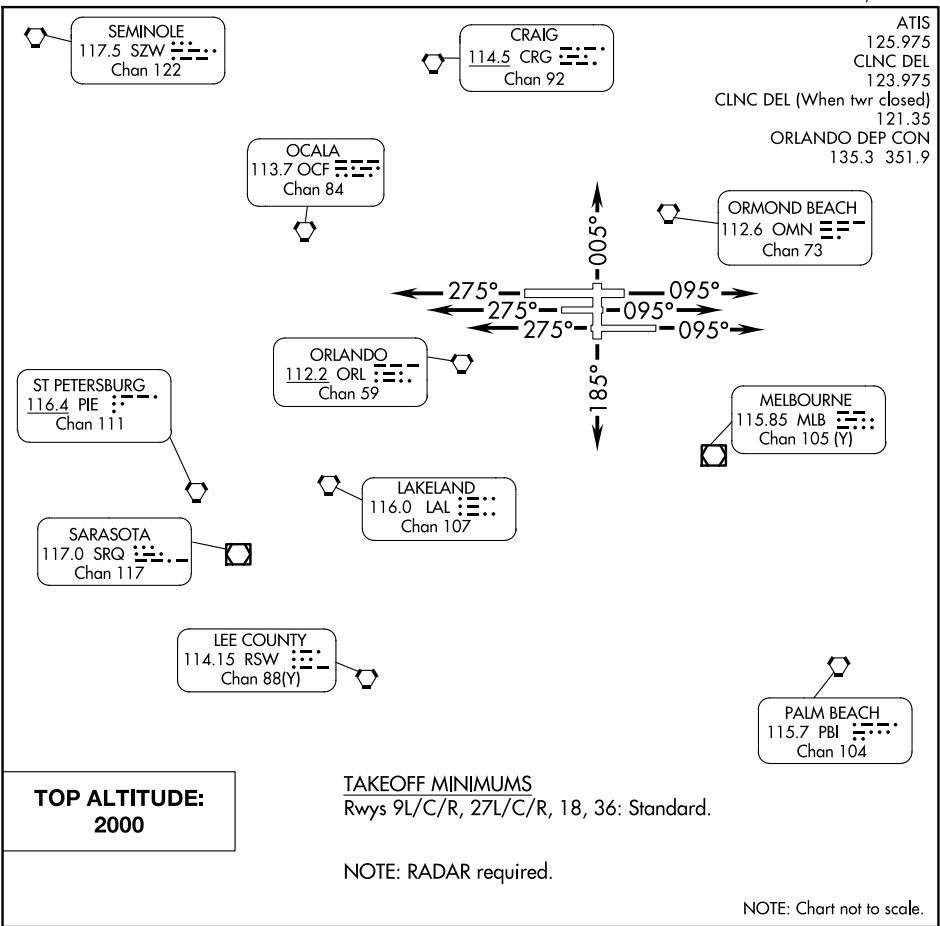


SANFORD ONE DEPARTURE



SE-3, 07 AUG 2025 to 04 SEP 2025

SE-3, 07 AUG 2025 to 04 SEP 2025

DEPARTURE ROUTE DESCRIPTION

TAKEOFF RUNWAYS 9L/C/R: Climb on heading 095°, thence. . .

TAKEOFF RUNWAYS 27L/C/R: Climb on heading 275°, thence. . .

TAKEOFF RUNWAY 18: Climb on heading 185°, thence. . .

TAKEOFF RUNWAY 36: Climb on heading 005°, thence. . .

. . . expect vectors to appropriate fix. Maintain 2000. Expect further clearance to filed altitude/flight level ten (10) minutes after departure.