

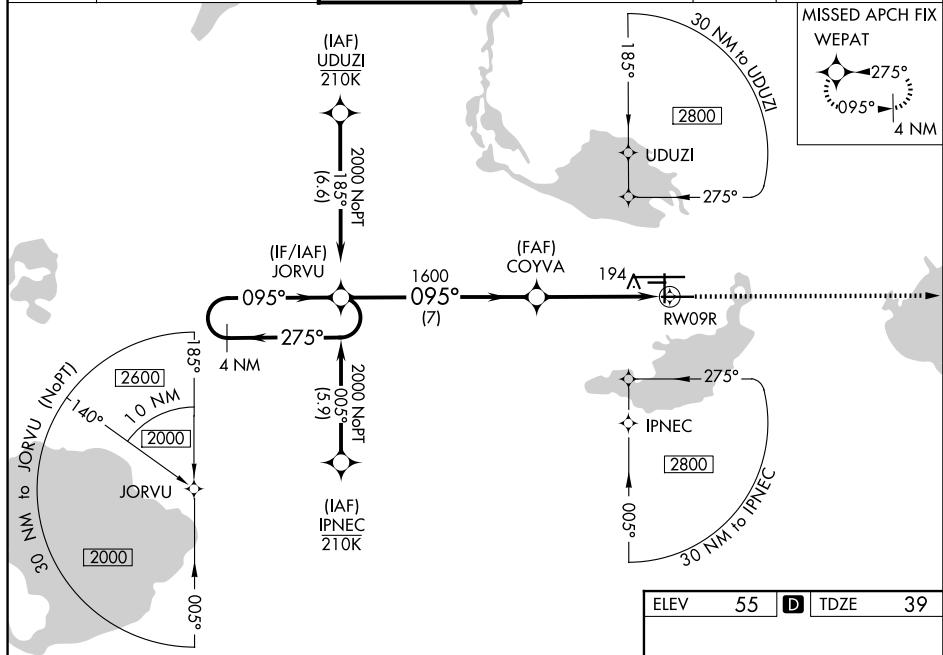
RNAV (GPS) RWY 9R
ORLANDO SANFORD INTL (SFB)

T For uncompensated Baro-VNAV systems, LNAV/VNAV NA below 0° C or above 54° C. Baro-VNAV and VDP NA when using Orlando Exec altimeter setting. **A** When local altimeter setting not received, use Orlando Exec altimeter setting and increase LPV DA to 282, LNAV/VNAV DA to 501 and all MDA 60 feet; increase LNAV/VNAV all Cats visibilities $\frac{1}{8}$ SM and LNAV Cat C/D visibility $\frac{1}{4}$ SM. Night landing: Rwy 27C NA.



MISSED APPROACH: Climb to 1600 direct WEPAT and hold.

CLNC DEL
121.35
(When twr closed)



4 NM Holding Pattern

JORVU

2000 ← 275°

095° →

GP 3.00°
TCH 45°

COYVA

1600

095°

1600

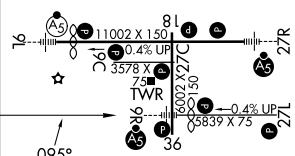
*1.2 NM to RW09R

RW09R

*LNAV only.

CATEGORY	A	B	C	D
LPV DA	239- $\frac{1}{2}$		200 (200- $\frac{1}{2}$)	
LNAV/ VNAV DA	458-1		419 (500-1)	
LNAV MDA	460- $\frac{1}{2}$	421 (500- $\frac{1}{2}$)	460- $\frac{3}{4}$	421 (500- $\frac{3}{4}$)
CIRCLING	580-1	525 (600-1)	600-1 $\frac{1}{2}$ 545 (600-1 $\frac{1}{2}$)	640-2 585 (600-2)

ELEV	55	D	TDZE	39
------	----	----------	------	----



MIRL Rwy 9C-27C and 18-36 **L**
HIRL Rwy 9L-27R and 9R-27L **L**
REIL Rwy 9C, 18, 27L and 36