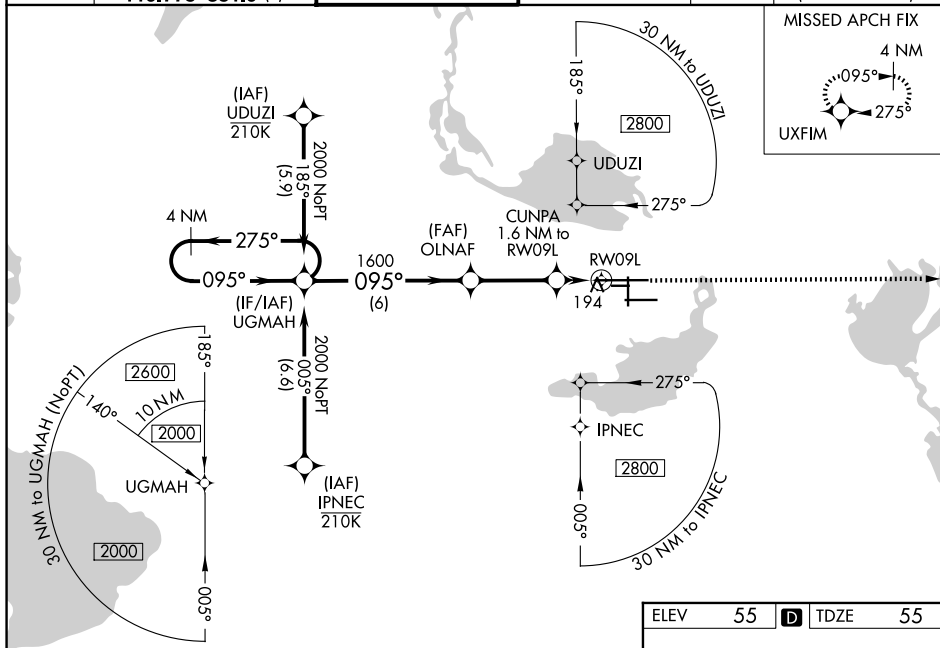


RNAV (GPS) RWY 9L
ORLANDO SANFORD INTL (SFB)

⚠ For uncompensated Baro-VNAV systems, LNAV/VNAV NA below 0°C or above 54°C. Baro-VNAV and VDP NA when using Orlando Exec altimeter setting. When local altimeter setting not received, use Orlando Exec altimeter setting and increase LPV DA to 282, LNAV/VNAV DA to 501 and all MDA 60 feet; increase LNAV/VNAV all Cats visibilities 1/8 SM and LNAV Cat C/D visibility 1/4 SM. Night landing: Rwy 27C NA.



MISSED APPROACH: Climb to 1600 direct UXFIM and hold.

MISSED APCH FIX

SE-3, 07 AUG 2025 to 04 SEP 2025

VGSI and RNAV glidepath not coincident
(VGSI Angle 3.00/TCH 71).

4 NM Holding Pattern UGMAH

2000 ← 275°
→ 095°

GP 3.00° TCH 55

OLNAF 1600

CUNPA 1.6 NM to RW09L

*1.1 NM to RW09L

RW09L

*600

1600

095°

1600

6 NM → 3.1 NM → 0.5 NM → 1.1 NM

CATEGORY A B C D

LPV DA 255-½ 200 (200-½)

LNAV/VNAV DA 355-½ 300 (300-½)

LNAV MDA 460-½ 405 (500-½) 460-¾ 405 (500-¾)

CIRCLING 580-1 525 (600-1) 600-1½ 545 (600-1½) 640-2 585 (600-2)

MIRL Rwy 9C-27C and 18-36
HIRL Rwy 9L-27R and 9R-27L
REIL Rwys 9C, 18, 27L and 36