

RNAV (GPS) RWY 27L  
ORLANDO SANFORD INTL (SFB)

MISSED APPROACH: Climb to 2000 direct JORVU and hold.

Procedure NA for arrivals at SMYRA on V3-533 northbound.

SMYRA  
2000 187° (8.3)

(IAF) VOFO 210K

1600 NoPT 195° (5.9)

(IF/IAF) WEPAT

(FAF) ONBEW

1600 275° (5.6)

1600 NoPT 352° (6)

(IAF) GACNO 210K

R-2935

LOBPI 2 NM to RW27L

161

RW27L

MSA RW27L 25 NM

2800

JORVU

095°

275°

4 NM

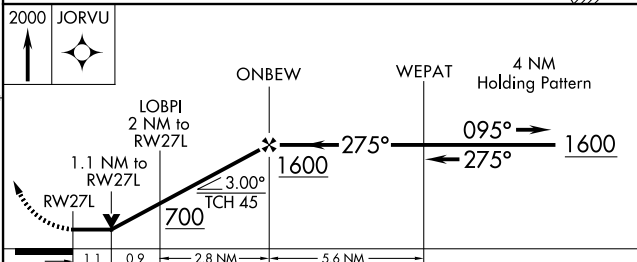
4 NM

ELEV 55

TDZE 28

28

MIRL Rwy 9C-27C and 18-36 **L**  
HIRL Rwy 9L-27R and 9R-27L **L**  
REIL Rwy 9C, 18, 27L and 36



CATEGORY	A	B	C	D
INAV MDA	420-1 392 (400-1)		420-1½ 392 (400-1½)	420-2 392 (400-2)
CIRCLING	580-1 525 (600-1)		600-1½ 545 (600-½)	640-2 585 (600-2)

SE-3, 07 AUG 2025 to 04 SEP 2025