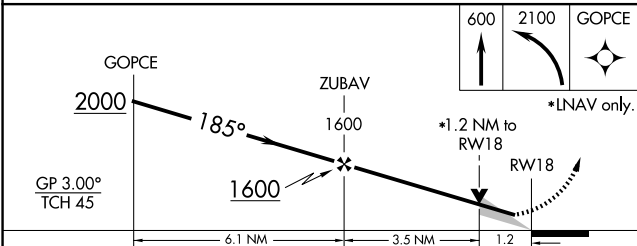
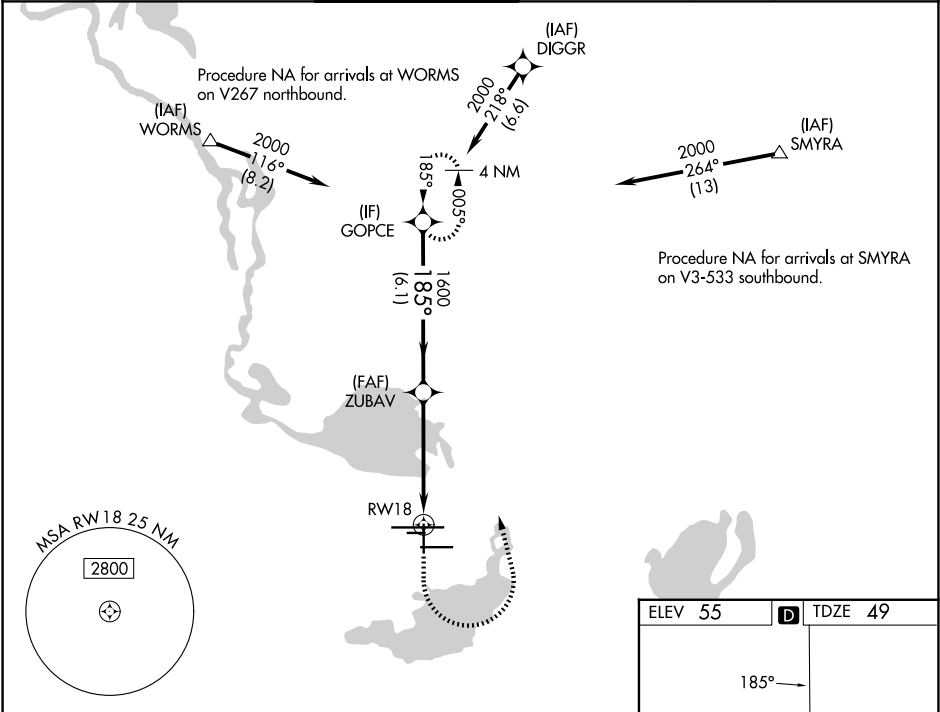


WAAS CH 45923 W18A	APP CRS 185°	Rwy Ldg 5956 TDZE 49 Apt Elev 55
--	------------------------	---

RNAV (GPS) RWY 18
ORLANDO SANFORD INTL (SF'B)

<p>▼ Night Landing: Rwy 27C NA. Baro-VNAV NA when using Orlando Exec altimeter setting. For uncompensated Baro-VNAV systems, LNAV/VNAV NA below -15°C (5°F) or above 43°C (109°F). DME/DME RNP-0.3 NA. VDP NA with Orlando Exec altimeter setting. When local altimeter setting not received, use Orlando Exec altimeter setting; increase LPV DA to 292 feet; increase LNAV/VNAV DA to 342 feet and all visibilities ¼ SM; increase all MDAs 60 feet and visibility Cats C and D ¼ SM.</p>	<p>MISSED APPROACH: Climb to 600 then climbing left turn to 2100 direct GOPCE and hold.</p>
--	--

ATIS 125.975	ORLANDO APP CON 135.3 351.9 (N) 119.775 351.9 (S)	SANFORD TOWER★ 120.3(CTAF) 0 254.35	GND CON 121.35 254.35	CLNC DEL 123.975	CLNC DEL 121.35 (When twr closed)
------------------------	---	---	---------------------------------	----------------------------	--



CATEGORY	A	B	C	D
LPV DA		249-¾	200 (200-¾)	
LNAV/VNAV DA		299-¾	250 (300-¾)	
LNAV MDA	480-1	431 (500-1)	480-1¼	431 (500-1¼)
CIRCLING	580-1	525 (600-1)	600-1½	640-2
			545 (600-1½)	585 (600-2)

