

LOC/DME I-FNU 110.15 Chan 38 (Y)	APP CRS 275°	Rwy Ldg 11002 TDZE 45 Apt Elev 55
--	------------------------	--

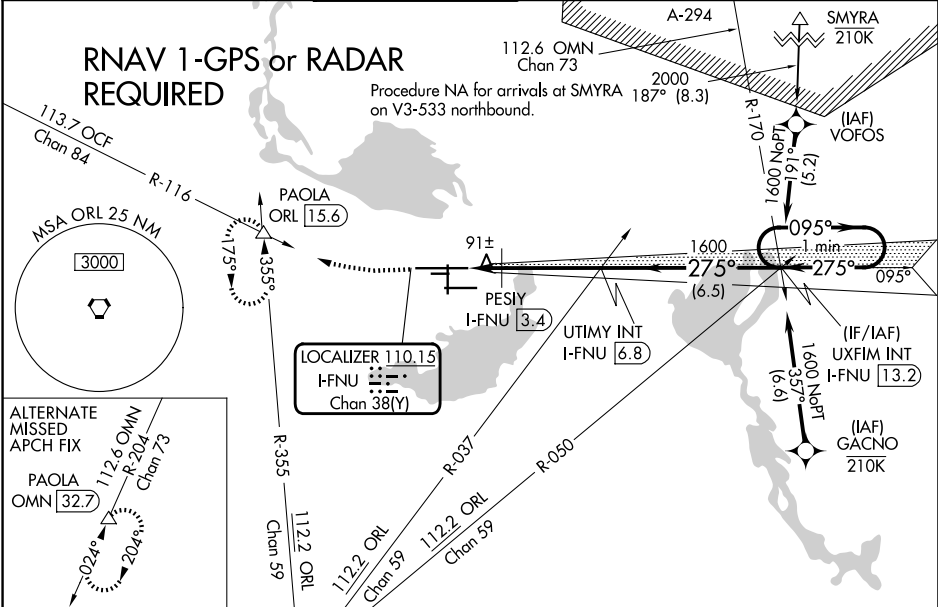
ILS or LOC RWY 27R
ORLANDO SANFORD INTL (SF'B)

▼ For inop ALS, increase PESIY FIX minimums
▲ Cat C/D visibility to 1 SM.

MAJSR

MISSED APPROACH: Climb to 500 then climbing right turn to 2800 on heading 280° and ORL VORTAC R-355 to PAOLA INT/ORL 15.6 DME and hold, continue climb-in-hold to 2800.

ATIS 125.975	ORLANDO APP CON 135.3 351.9 (N) 119.775 351.9 (S)	SANFORD TOWER★ 120.3 (CTAF) 0 254.35	GND CON 121.35 254.35	CLNC DEL 123.975	CLNC DEL 121.35 (When twr closed)
------------------------	---	---	---------------------------------	----------------------------	--



ELEV 55	D	TDZE 45	500	2800	PAOLA	VGSI and ILS glidepath not coincident (VGSI Angle 3.00/TCH 72).
			<p>*LOC only.</p> <p>UTIMY INT I-FNU 6.8</p> <p>UXFIM INT I-FNU 13.2</p> <p>One Minute Holding Pattern</p> <p>GS 3.00° TCH 55</p>			
			CATEGORY A B C D			
S-ILS 27R			245-1/2 200 (200-1/2)			
S-LOC 27R			480-1/2 435 (500-1/2) 480-3/4 435 (500-3/4)			
CIRCLING			580-1 525 (600-1) 600-1 1/2 545 (600-1 1/2) 640-2 585 (600-2)			
			PESIY FIX MINIMUMS			
S-LOC 27R			400-1/2 355 (400-1/2) 400-5/8 355 (400-5/8)			
CIRCLING			580-1 525 (600-1) 600-1 1/2 545 (600-1 1/2) 640-2 585 (600-2)			