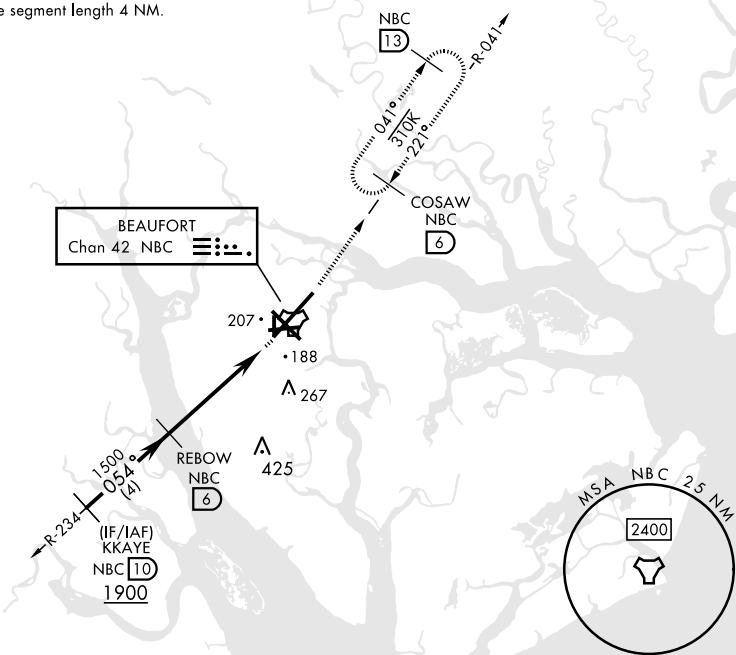


TACAN RWY 5

TACAN NBC Chan 42	APCH CRS 054°	Rwy Ldg 12,202 TDZE 37 Arprt Elev 37	[USN]	BEAUFORT MCAS (MERRITT FLD) (KNBC)	
RADAR required			SALSF A2	MISSED APPROACH: Climb to 1000, then climbing left turn to 3000 via NBC TACAN R-041 to COSAW and hold. Continue climb-in-hold to 3000.	
ATIS ★ 279.525	APP CON 125.125 292.125 (ABV 3000) 123.7 269.125 (3000 and BLW)	TOWER ★ 119.05 342.875	GND CON 128.15 348.625	CLNC DEL 128.15 254.375	ASR/PAR

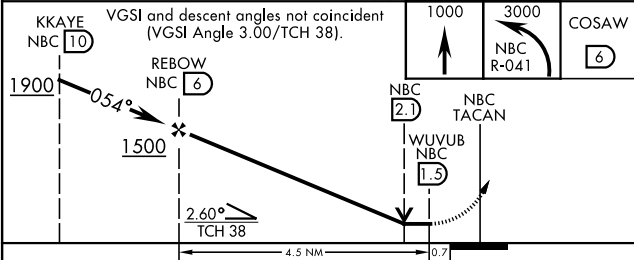
CAUTION: Intermediate segment length 4 NM.

154

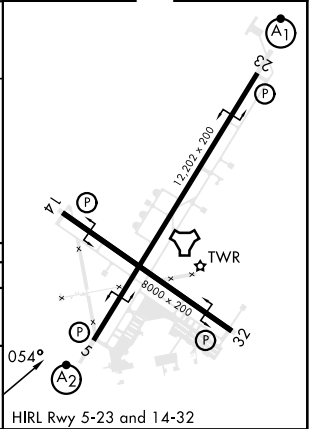


EMERG SAFE ALT 100 NM 3100

ELEV	37	TDZE	37
------	----	------	----



CATEGORY	A	B	C	D	E
S-5 *	480-¾ 443 (500-¾)	480-1	443	(500-1)	
CIRCLING	560-1 523 (600-1)	580-1½ 543 (600-1½)	600-2 563 (600-2)	740-2½ 703 (800-2½)	



TACAN RWY 5

SE-2, 07 AUG 2025 to 04 SEP 2025

SE-2, 07 AUG 2025 to 04 SEP 2025