


TACAN RWY 32

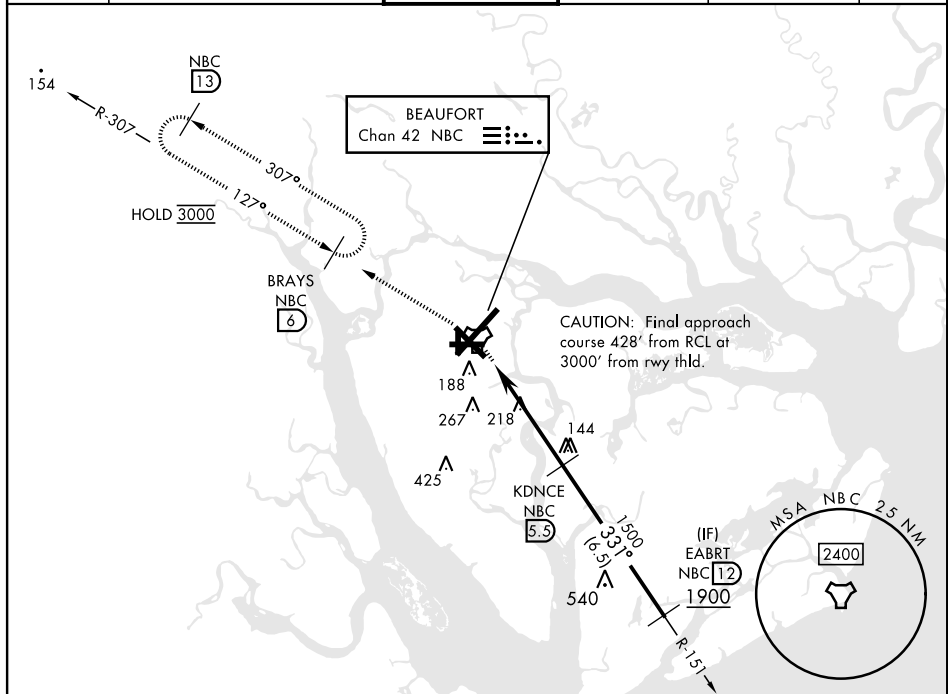
TACAN NBC Chan <b>42</b>	APCH CRS <b>331°</b>	Rwy Idg <b>8000</b> TDZE <b>25</b> Arpt Elev <b>37</b>
-----------------------------	-------------------------	--

[USN]

BEAUFORT MCAS (MERRITT FLD) (KNBC)

	<p>MISSED APPROACH: Climb to 3000 on NBC TACAN R-307 to BRAYS and hold. Continue climb in hold to 3000.</p>
---	---

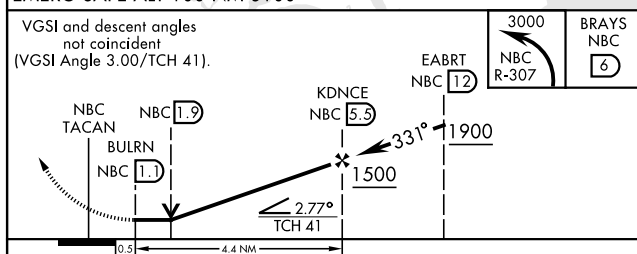
ATIS ★ 279.525	APP CON 125.125 292.125 (ABV 3000) 123.7 269.125 (3000 and BLW)	TOWER★ 119.05 342.875	GND CON 128.15 348.625	CLNC DEL 128.15 254.375	ASR/PAR
-------------------	---	--------------------------	---------------------------	----------------------------	---------




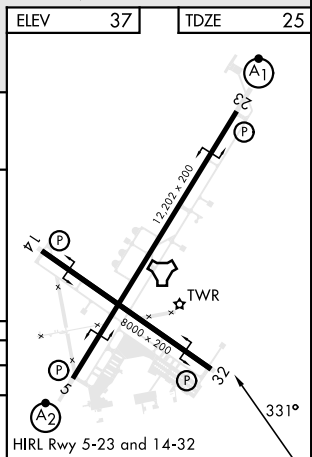
SE-2, 07 AUG 2025 to 04 SEP 2025

EMERG SAFE ALT 100 NM 3100

VGSI and descent angles  
not coincident  
(VGSI Angle 3.00/TCH 41).



CATEGORY	A	B	C	D	E
S-32	480-1	455 (500-1)	480-1 $\frac{3}{8}$	455	(500- $\frac{1}{8}$ )
 CIRCLING	560-1	523 (600-1)	580-1 $\frac{1}{2}$ 543 (600- $\frac{1}{2}$ )	600-2 563 (600-2)	740-2 $\frac{1}{2}$ 703 (800-2 $\frac{1}{2}$ )



## TACAN RWY 32