

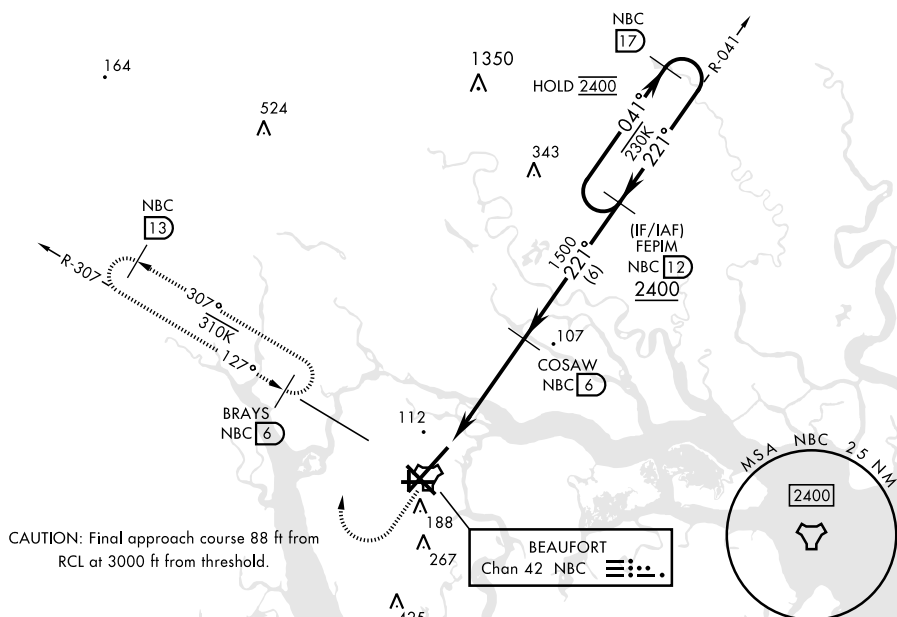


TACAN RWY 23

TACAN NBC Chan <b>42</b>		APCH CRS <b>221°</b>		Rwy Idg <b>12,202</b> TDZE <b>16</b> Arpt Elev <b>37</b>		[USN]		BEAUFORT MCAS (MERRITT FLD) (KNBC)				
RADAR required						ALS-F1 		MISSED APPROACH: Climb to 500, then climbing right turn to 3000, join NBC TACAN R-307 direct BRAYS and hold. Continue climb in hold to 3000.				
 *When ALS inop, increase vis to 1 mile.												
ATIS ★ <b>279.525</b>		APP CON <b>125.125 292.125</b> (ABV 3000) <b>123.7 269.125</b> (3000 and BLW)				TOWER ★ <b>119.05 342.875</b>		GND CON <b>128.15 348.625</b>		CLNC DEL <b>128.15 254.375</b>		ASR/PAR



EMERG SAFE ALT 100 NM 3100

ELEV	37		TDZE	16
------	----	--	------	----

