

TACAN RWY 14

TACAN NBC	APCH CRS	Rwy Idg
Chan 42	127°	TDZE 32
		Arpt Elev 37

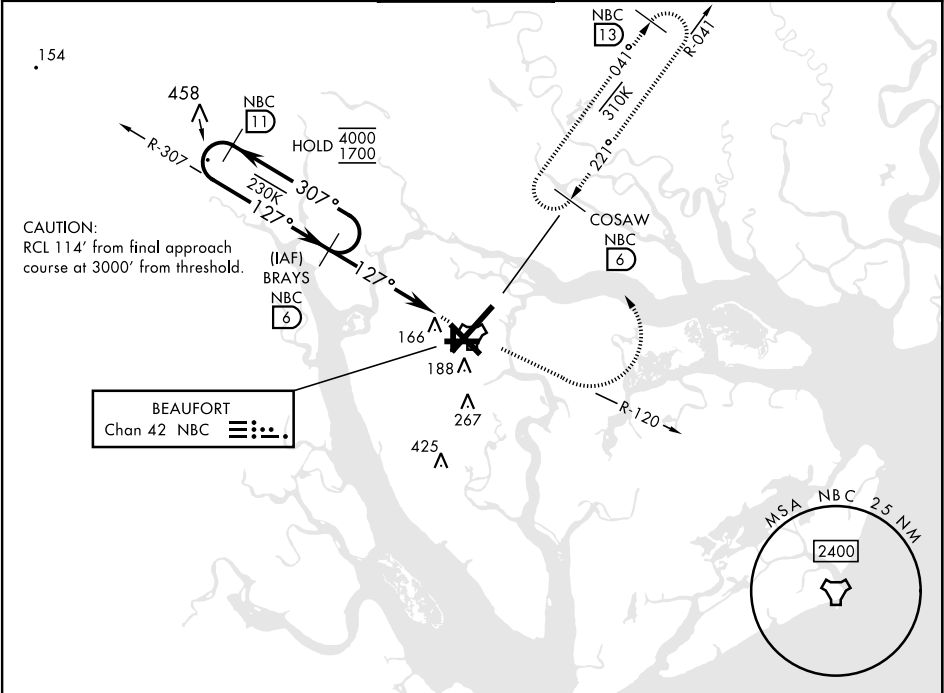
[USN]

BEAUFORT MCAS (MERRITT FLD) (KNBC)

RADAR required
▼

MISSED APPROACH: Climb to 1600 on NBC TACAN R-120, then climbing left turn to 3000 via hdg 330° to intercept NBC R-041 to 6 DME (COSAW) and hold. Continue climb in hold to 3000.

ATIS★	APP CON	TOWER★	GND CON	CINC DEL	ASR/PAR
279.525	125.125 292.125 (ABV 3000) 123.7 269.125 (3000 and BLW)	119.05 342.875	128.15 348.625	128.15 254.375	



SE-2, 07 AUG 2025 to 04 SEP 2025

SE-2, 07 AUG 2025 to 04 SEP 2025

ELEV 37 TDZE 32

EMERG SAFE ALT 100 NM 3100

NBC 11	BRAYS NBC 6	1600 NBC R-120	3000	COSAW R-041
4000 1700	307°	127°	127°	6
2.94° TCH 40		WUSAL NBC 15		
4.5 NM		NBC TACAN		

CATEGORY	A	B	C	D	E
S-14	420-1 388 (400-1)		420-1 1/2 388 (400-1 1/2)		
CIRCLING	560-1 523 (600-1)		580-1 1/2 543 (600-1 1/2)	600-2 563 (600-2)	740-2 1/2 703 (800-2 1/2)

HIRL Rwy 5-23 and 14-32

TACAN RWY 14