


WAAS Chan <b>93379</b> <b>W23A</b>	APCH CRS <b>227°</b>	Rwy Idg <b>12,202</b> TDZE <b>16</b> Arprt Elev <b>37</b>
--	-------------------------	---

[USN]

# RNAV (GPS) RWY 23

BEAUFORT MCAS (MERRITT FLD) (KNBC)

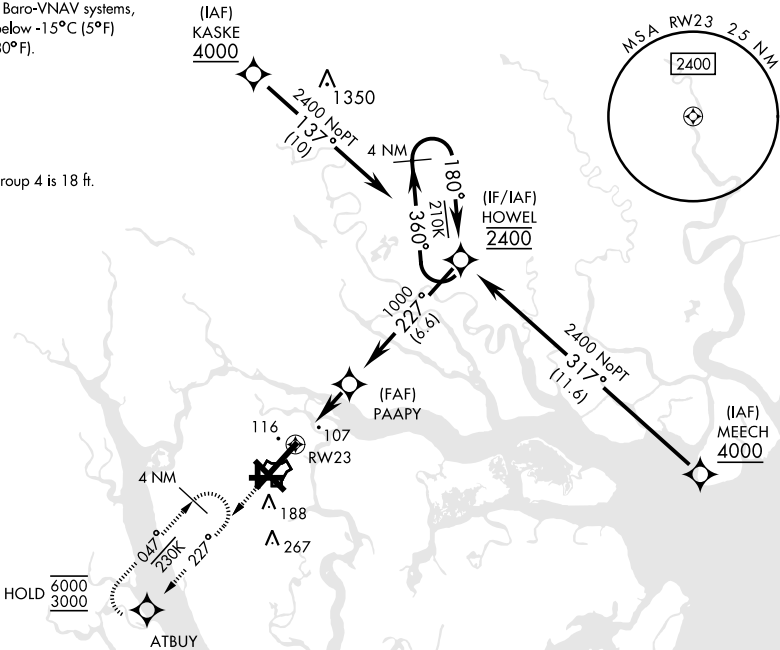
RNP APCH	ALSIF-1 	MISSED APPROACH: Climb to 3000 direct ATBUY and hold. Continue climb in hold to 3000.
RADAR required.		
▼ **When ALS inop, increase vis to ¾ mile. ▼ **When ALS inop, increase vis to 1 mile.		

ATIS ★ <b>279.525</b>	APP CON <b>125.125 292.125</b> (ABV 3000) <b>123.7 269.125</b> (3000 and BLW)	TOWER ★ <b>119.05 342.875</b>	GND CON <b>128.15 348.625</b>	CLNC DEL <b>128.15 254.375</b>	ASR/ PAR
--------------------------	---	----------------------------------	----------------------------------	-----------------------------------	-------------

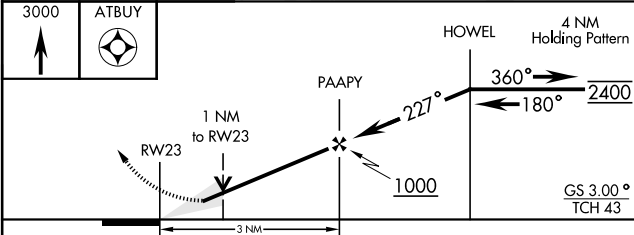
For uncompensated Baro-VNAV systems,  
LNAV/VNAV NA below -15°C (5°F)  
or above 54°C (130°F).

• 164

CAUTION: WCH Group 4 is 18 ft.

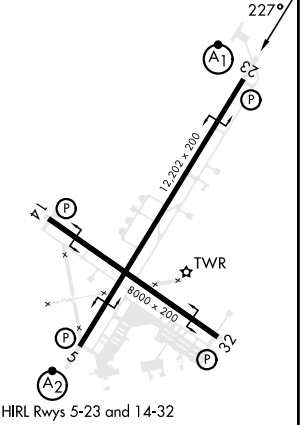


EMERG SAFE ALT 100 NM 3100



ELEV 37	TDZE 16
---------	---------

CATEGORY	A	B	C	D
LPV DA *	216-½	200	(200-½)	
LNAV/ VNAV DA **	380-⅝	364	(400-⅝)	
LNAV MDA **	380-½ 364 (400-½)	380-¾ 364 (400-¾)		
CIRCLING	560-1 523 (600-1)	580-1½ 543 (600-1½)	600-2 563 (600-2)	



# RNAV (GPS) RWY 23

SE-2, 07 AUG 2025 to 04 SEP 2025

SE-2, 07 AUG 2025 to 04 SEP 2025