

WAAS Chan <b>91240</b> <b>W14A</b>	APCH CRS <b>140°</b>	Rwy Idg TDZE Arpt Elev <b>8000</b> <b>32</b> <b>37</b>
--	-------------------------	---

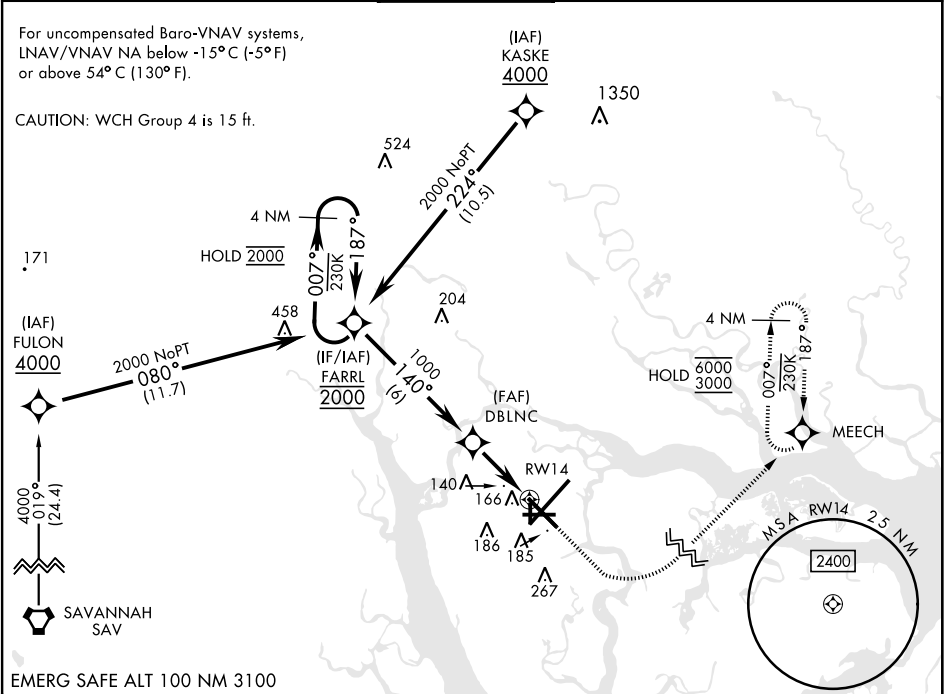
[USN]

RNAV (GPS) RWY 14

BEAUFORT MCAS (MERRITT FLD) (KNBC)

RNP APCH	MISSED APPROACH: Climb to 700, then climbing left turn to 3000 direct MEECH and hold.
RADAR required for arrivals via KASKE or FARRL IAFs.	

ATIS ★ <b>279.525</b>	APP CON (ABV 3000) <b>125.125 292.125</b> (3000 and BLW) <b>123.7 269.125</b>	TOWER ★ <b>119.05 342.875</b>	GND CON <b>128.15 348.625</b>	CLNC DEL <b>128.15 254.375</b>	ASR/ PAR
--------------------------	---	----------------------------------	----------------------------------	-----------------------------------	-------------



4 NM Holding Pattern FARRL				700		3000		MEECH		ELEV 37		TDZE 32	
<div><div>2000</div><div>← 007°</div><div>187° →</div></div>				<div><div>DBLNC</div><div>140°</div><div>1000</div><div>1.1 NM to RW14</div><div>RW14</div><div>2.9 NM</div></div>								<div><div>140°</div><div>12,202 x 200</div><div>TWR</div><div>8000 x 200</div><div>32</div><div>A1</div><div>A2</div></div>	
CATEGORY				A		B		C		D			
LPV DA				232-¾		200		(200-¾)					
LNAV/VNAV DA				416-1⅛		384		(400-1⅛)					
LNAV MDA				420-1 388 (400-1)		420-1 ⅓ 388 (400-1 ⅓)							
CIRCLING				560-1 523 (600-1)		580-1½ 543 (600-1½)		600-2 563 (600-2)					

HIRL Rwy 5-23 and 14-32

RNAV (GPS) RWY 14

SE-2, 07 AUG 2025 to 04 SEP 2025

SE-2, 07 AUG 2025 to 04 SEP 2025