

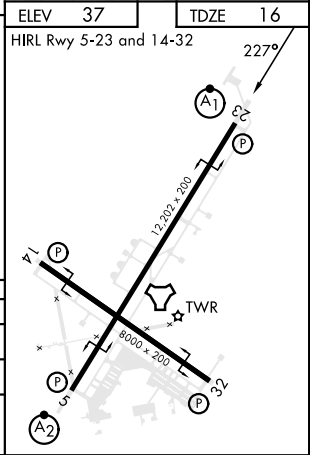
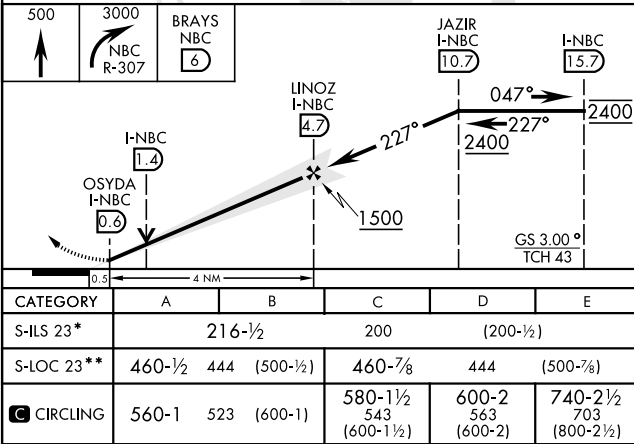
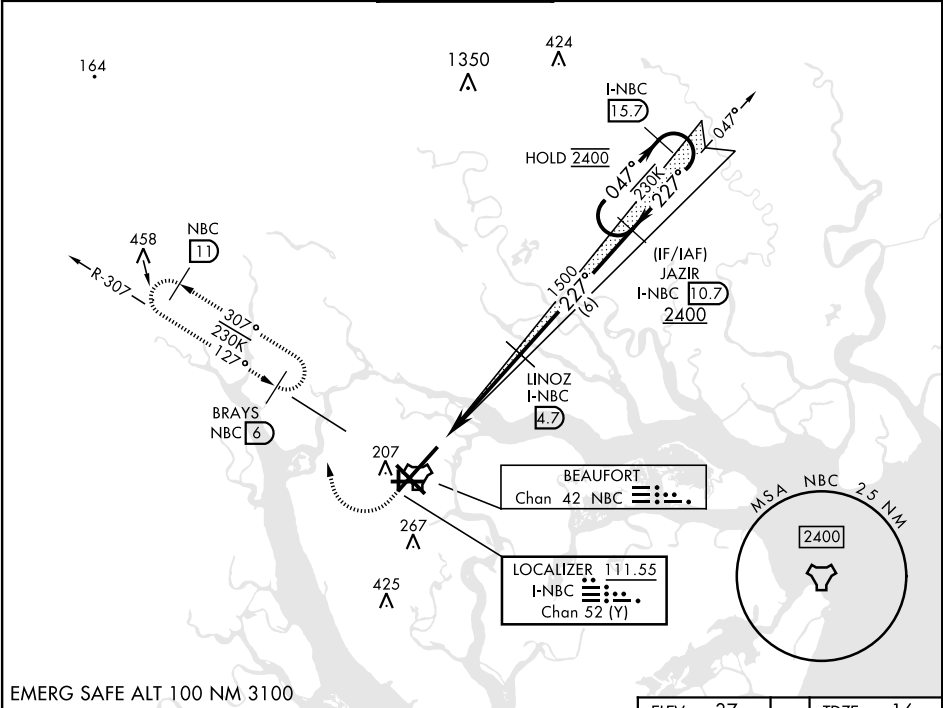
ILS or LOC Z RWY 23

LOC/DME I-NBC 111.55 Chan 52 (Y)	APCH CRS 227°	Rwy Idg 12,202 TDZE 16 Arprt Elev 37
--	-------------------------	---

[USN]

BEAUFORT MCAS (MERRITT FLD) (KNBC)

RNAV or RADAR required for missed approach.			ALSIF-1 	MISSED APPROACH: Climb to 500, then climbing right turn to 3000, join NBC TACAN R-307 direct BRAYS and hold. Continue climb in hold to 3000.		
*When ALS inop, increase vis to ¾ mile. **When ALS inop, increase CAT AB vis to 1 mile; CAT CDE vis to 1½ miles.						
ATIS ★ 279.525	APP CON 125.125 292.125 (ABV 3000) 123.7 269.125 (3000 and BLW)		TOWER ★ 119.05 342.875	GND CON 128.15 348.625	CLNC DEL 128.15 254.375	ASR/PAR



ILS or LOC Z RWY 23

SE-2, 07 AUG 2025 to 04 SEP 2025

SE-2, 07 AUG 2025 to 04 SEP 2025