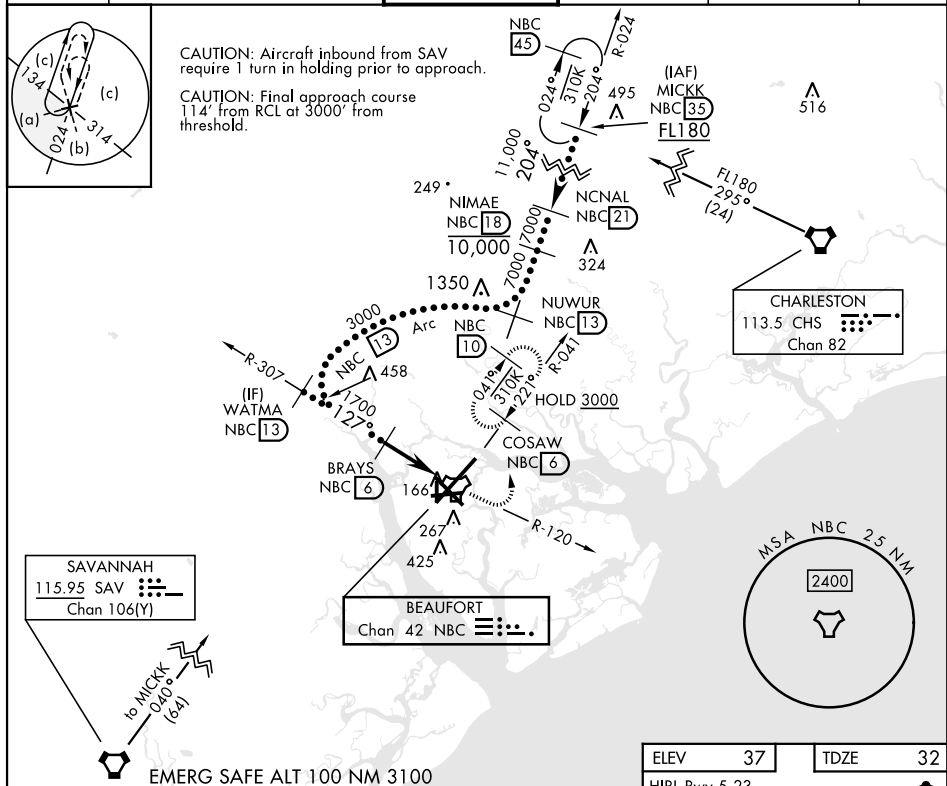


BEAUFORT, SOUTH CAROLINA

HI-TACAN Z RWY 14

TACAN NBC Chan <b>42</b>		APCH CRS <b>127°</b>		Rwy Idg <b>8000</b> TDZE <b>32</b> Arpt Elev <b>37</b>		[USN]		BEAUFORT MCAS (MERRITT FLD)		(KNBC)		
RADAR required ▼				MISSED APPROACH: Climb to 1600 on NBC TACAN R-120, then climbing left turn to 3000 via hdg 330° to intercept NBC R-041 to 6 DME (COSAW) and hold. Continue climb in hold to 3000.								
ATIS ★ <b>279.525</b>		APP CON (ABV 3000) <b>125.125 292.125</b> (3000 and BLW) <b>123.7 269.125</b>				TOWER ★ <b>119.05 342.875</b>		GND CON <b>128.15 348.625</b>		CLNC DEL <b>128.15 254.375</b>		ASR/PAR



The figure illustrates a flight plan for a mission. It includes a flight profile diagram, a table of flight data, and a map of the flight area.

**Flight Profile Diagram:** The diagram shows the altitude profile of the flight. The altitude starts at 3000 feet, descends to 1700 feet, and then levels off at 1700 feet. The horizontal distance is 4.5 NM. The vertical distance is 0.7 NM. The horizontal distance is 4.5 NM. The vertical distance is 0.7 NM. The horizontal distance is 4.5 NM. The vertical distance is 0.7 NM.

**Table of Flight Data:**

CATEGORY	C	D	E
S-14	420-1½	388	(400-1½)
<b>C</b> CIRCLING	580-1½ 543 (600-1½)	600-2 563 (600-2)	740-2½ 703 (800-2½)

**Map of the Flight Area:** The map shows the flight area with various landmarks and coordinates. The flight path is indicated by a dashed line. The map includes a scale bar and a north arrow.

BEAUFORT, SOUTH CAROLINA

32° 29'N-80° 43'W

BEAUFORT MCAS (MERRITT FLD) (KNBC)

Amdt 4 11JUL24

HI-TACAN Z RWY 14